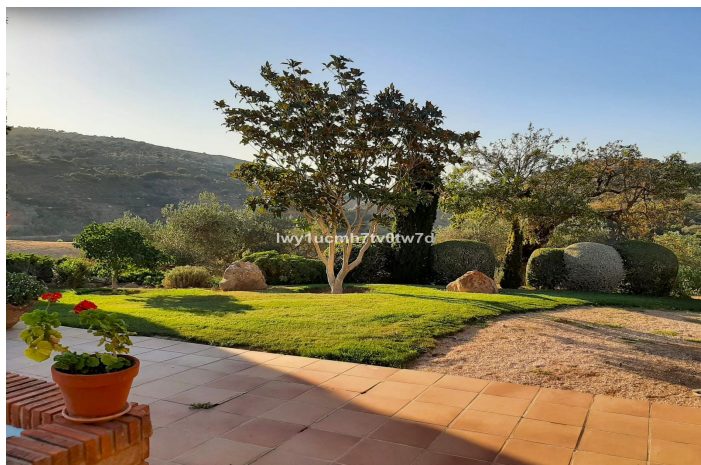
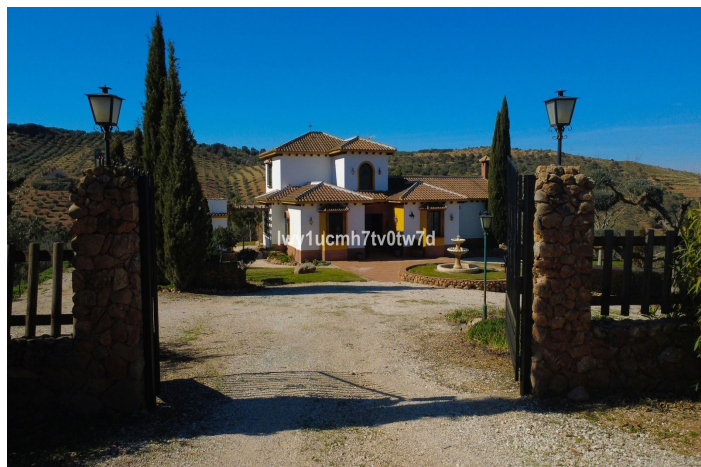




Finca - Rural Estate for sale in Archidona, Archidona

890,000 €

Reference: R5037040 Bedrooms: 4 Bathrooms: 3 Plot Size: 73,936m² Build Size: 332m²





Nororma, Archidona

Discover Cortijo Magdalena, a spectacular luxury estate in the heart of Andalusia. Spanning over 7.6 hectares, this unique property combines the charm of rural life with modern comforts. Located in Archidona, Málaga, with easy access from the A7 motorway (exit 16), this estate is the perfect retreat for those seeking exclusivity, privacy, and a deep connection with nature. The Estate: Space, Beauty, and Functionality ✓ Total area: 76,897 m², fully fenced ✓ Olive grove: 34,834 m² of productive land ✓ Fruit trees and vegetable garden: 4,800 m² dedicated to fruit trees and cultivation ✓ Agricultural and woodland areas Within the estate, a private fenced area of 6,300 m² encloses the stunning residence, landscaped gardens, swimming pool, and additional facilities, making this cortijo truly exceptional. The House: Authenticity and Comfort in 370 m² Built in 2008, this two-story residence offers the perfect blend of tradition and modernity: ✓ Ground floor: Entrance hall with distribution area Spacious living-dining room with a cozy fireplace, ideal for gatherings Fully equipped kitchen 3 bright bedrooms 2 full bathrooms with showers Covered porch with breathtaking views of the Andalusian countryside ✓ Upper floor: Staircase with distribution area Impressive master suite with private bathroom and shower Facilities and Extras: Everything You Need ✓ Sustainability and energy efficiency: Solar panels with a 500 L hot water accumulator ✓ Self-sufficient water supply: 2 private wells, a 100,000 L water cistern, and a 25,000 L municipal water cistern ✓ Covered parking for up to 4 vehicles ✓ Machinery house (18 m²) with an oil-fired heating boiler and 1,000 L fuel tank ✓ Beautiful landscaped gardens with 3 decorative fountains ✓ Private swimming pool surrounded by greenery ✓ Designated areas for chickens, turkeys, and ducks Prime Location This Andalusian paradise offers absolute tranquility while remaining close to major cities and services: Villanueva del Rosario: 10 km Archidona: 18 km Antequera: 25 km Málaga and its airport: 46 km and 55 km, respectively Granada: 80 km If you are looking for a luxury estate in an unparalleled natural setting, Cortijo Magdalena is a unique opportunity. Perfect as a private residence, investment, or rural tourism business. Contact us today for more information and come experience your dream home!



Features:

Country