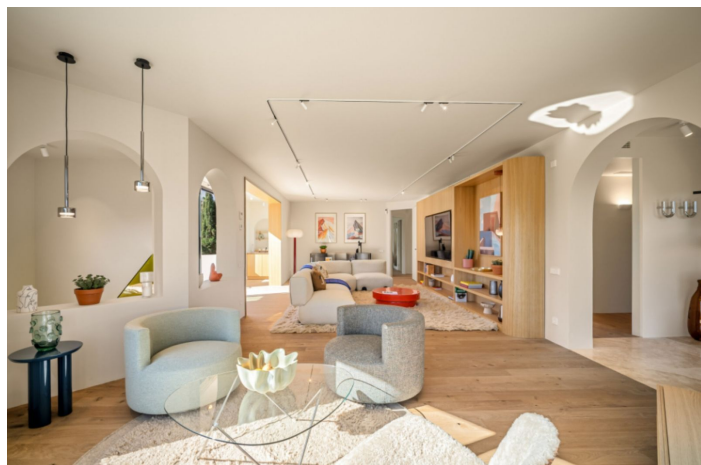




Detached Villa for sale in Nueva Andalucía, Marbella

3,550,000 €

Reference: R5017633 Bedrooms: 4 Bathrooms: 4 Plot Size: 1,006m² Build Size: 262m² Terrace: 86m²





Costa del Sol, Nueva Andalucía

This stunning Mediterranean-style villa is located in the heart of Nueva Andalucía and perfectly blends contemporary elegance with the natural beauty of its surroundings. Nestled within a meticulously landscaped garden that wraps around the home, the property offers a profound sense of privacy and serenity. Towering trees and lush greenery enhance the seclusion, while the private outdoor pool provides a peaceful oasis ideal for relaxation. With ample space for entertaining, the villa is perfect for those who appreciate refined luxury and a strong connection to nature.

Upon entering, the interior welcomes you with warmth and sophistication. The design combines modern architecture with elegant wooden details, creating a harmonious and inviting ambiance. The open-concept kitchen and dining area offer a seamless transition between spaces and are equipped with state-of-the-art appliances, catering to culinary enthusiasts. The impressive living room features panoramic views of the iconic La Concha mountain and opens onto a cozy chill-out area—an intimate space designed for unwinding and entertaining in style.

The master suite is a standout feature, with expansive windows that flood the room with natural light and frame idyllic garden views. The en-suite bathroom, conceived as a private sanctuary, offers a luxurious experience of comfort and indulgence. A private driveway leads to a covered parking area, ensuring both convenience and security.

Ideally situated in one of Marbella's most prestigious residential areas, this villa offers the perfect balance of exclusivity, comfort, and Mediterranean charm—an exceptional home to enjoy year-round.



Features:

Features

Covered Terrace
Private Terrace
Ensuite Bathroom

Setting

Close To Port
Close To Sea
Close To Shops
Close To Town
Close To Schools

Kitchen

Fully Fitted

Orientation

South East

Condition

Excellent

Garden

Private

Views

Mountain
Garden
Pool

Pool

Private

Parking

More Than One