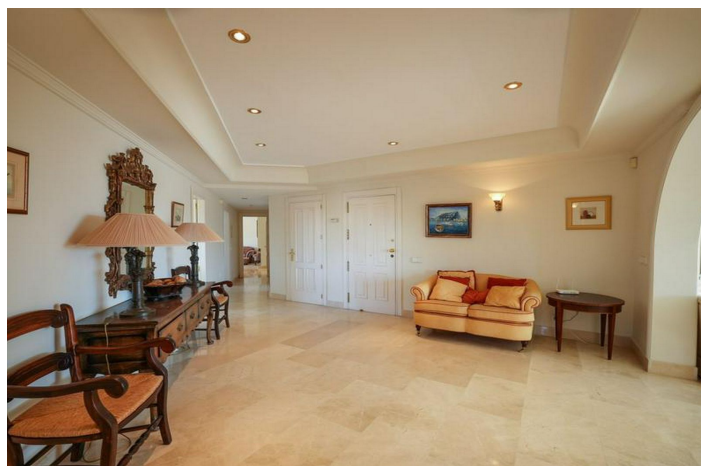
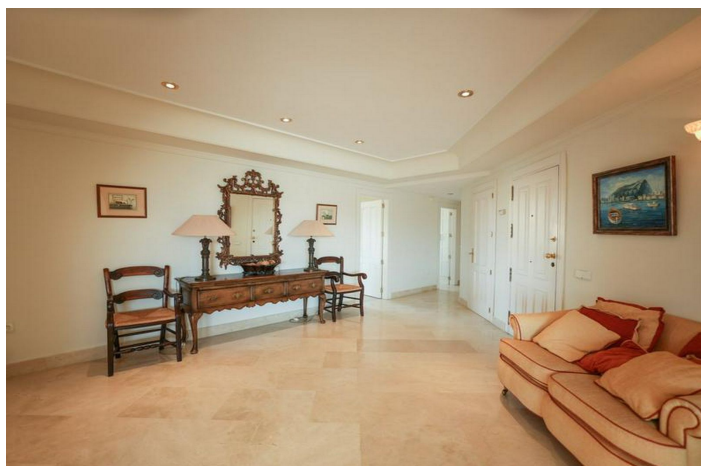




Penthouse à vendre à Sotogrande Marina, Sotogrande

1 850 000 €

Référence: R4957975 Chambres: 4 Bain: 4 Construite: 446m² Terrasse: 379m²





Costa de la Luz, Sotogrande Marina

Luxury Penthouse in a Prime Location – Sotogrande Puerto Discover this exclusive penthouse in Puerto de Sotogrande, offering breathtaking panoramic views of the sea, the Marina, and Gibraltar. Located in the prestigious Costa del Sol, this home provides a sophisticated lifestyle with spacious interiors and high-end finishes. Key Features: Total area: 820 m² Built area: 446 m² | Usable area: 379 m² Private terrace: 374 m², perfect for enjoying the Mediterranean climate Bedrooms: 4 en-suite, designed for maximum comfort Bathrooms: 4, featuring luxurious finishes Layout & Spaces: Spacious reception areas with 3 independent living rooms Elegant dining room with terrace access Fully equipped kitchen with outdoor dining area Covered terrace with spectacular views Two underground parking spaces Extras & Services: ☑ Climate control: Air conditioning & central heating ☑ 24h security in the complex ☑ Luxury finishes: Marble floors, built-in wardrobes ☑ Elevator and step-free access ☑ Prime location: Seafront property, close to golf courses, shops, and restaurants This penthouse is a unique opportunity for those seeking luxury, comfort, and an unbeatable location in Sotogrande. Ideal as a permanent residence, holiday home, or investment. Price: €1,850,000 (5.13% discount from the original price) Would you like more information or to schedule a viewing? Contact us today!



Spécification:

Caractéristiques

Terrasse privée
Sol en marbre
Double vitrage

Vues

Mer
Jardin
Port
Urban

Piscine

Communautaire

Jardin

Communautaire
Aménagé

Catégorie

Luxe

Orientation

Sud

Paramètre

Port

Meubles

Entièrement meublé

Sécurité

Complexe fermé
Sécurité 24 heures
Téléphone d'entrée

Climatisation

Climatisation
Cold A / C
A / C chaud
Cheminée
Chauffage central

Condition

Excellent

Cuisine

Entièrement équipé

Parking

Souterrain