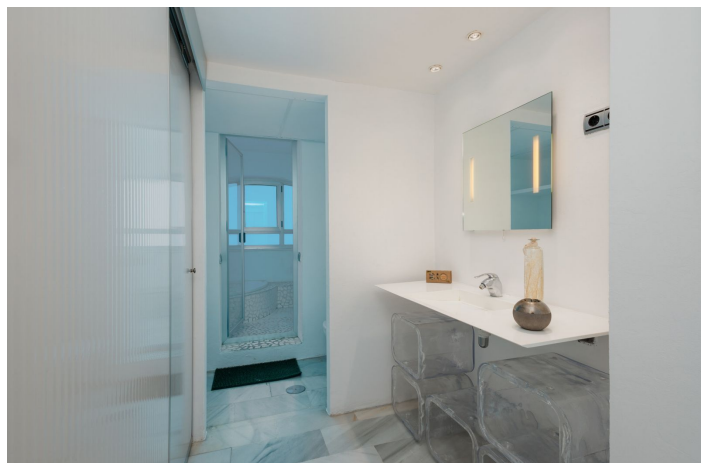




Penthouse à louer à Puerto Banús, Marbella

1 600 - 1 600 €

Référence: R4888828 Chambres: 2 Bain: 2 Construite: 191m²





Costa del Sol, Puerto Banús

MONTHLY RENT FROM NOVEMBER TO MARCH: MONTH + ELECTRICITY + FINAL CLEANING. MINIMUM STAY OF ONE MONTH. WE DO NOT DO ANNUAL RENTALS

Welcome to the most spectacular penthouse in Puerto Banús, located in the heart of Avenida Julio Iglesias, one of the most emblematic and exclusive places in the city. This impressive penthouse vacation apartment is ideal for those looking for a unique experience on the Costa del Sol and having the beach just a few meters from their accommodation.

Just a few steps away you will find the most luxurious brands in the world, such as Gucci, Louis Vuitton and Versace, as well as the well-known Puerto Banús marina, where jet set yachts dock. In addition, there is a wide variety of first-rate restaurants and cocktail bars, such as Casa Blanca, perfect for enjoying Spanish tapas, Pizzeria Picasso, where you can try the best Italian food, Astral, ideal for having cocktails in a different environment, since the place has the shape of a boat or Tango Grill, specialized in Argentine meats. There are also plenty of other shopping options to find everything you need, including the El Corte Inglés shopping centre, just a few minutes' walk away, which has a supermarket inside.

If what you want is to enjoy the beach, you are in luck. Just 350 meters away, you will find the beach of Puerto Banús and, if you walk a few more minutes, you will arrive at Playa Nueva Andalucía.

If you are a golf lover, you are in luck. There are several golf courses nearby, such as the Real Club de Golf Las Brisas, Golf Club Aloha and Los Naranjos Golf Club.

And if you feel like exploring other corners and experiencing something different, Marbella is only 5 minutes away by car.

The penthouse has 191 m2 and offers impressive views of the sea, perfect for enjoying the most spectacular sunsets on the Costa del Sol. Inside you will find 2 bedrooms, 2 bathrooms, a living room, a dining room, a kitchen and a cozy terrace. The spacious, double-height living room has a beautiful fireplace, a dining room with space for 6 people and a second relaxation area where you can enjoy the immense Alboran Sea, as well as a smart TV.

The kitchen with a modern touch has all the appliances and utensils you need for day to day, such as a ceramic hob, refrigerator, dishwasher, microwave, kettle, coffee maker, toaster, cutlery, crockery, glassware and kitchenware. The en-suite master bedroom has a comfortable double bed and a spacious bathroom where you will find the sink area, the toilet area and the shower area with a hydromassage bathtub and separate shower. In addition, it has its own private terrace.

The en-suite guest bedroom has two single beds and a charming balcony overlooking the Antonio Banderas square. The bathroom is composed of a perfect bathtub to relax. Throughout the property you can find free internet/wifi, air conditioning, bed linen and towels for your comfort and better experience.

The property has a decibel and crowd detector. For your safety, the property complies with all legal regulations. It has an alarm system inside, smoke detector, fire extinguisher and first aid kit.

Currently the jacuzzi is not in operation.



Finally, the property has a parking space so you can enjoy the city without worrying about parking. Do not miss the opportunity to stay in this incredible penthouse and experience the best of Puerto Banús. Book now and enjoy an unforgettable vacation on the Costa del Sol!



Spécification:

Caractéristiques

Ascenseur
Près du transport
Terrasse privée
Salle de bain attenante
Armoires ajustées
Wifi

Paramètre

En bord de mer
Près du port
Près de la mer
Proche des magasins
Près de la ville
Près des écoles
En bord de mer

Cuisine

Partiellement ajusté

Catégorie

En bord de mer

Climatisation

Climatisation
Cheminée
Chauffage central

Condition

Excellent

Sécurité

Complexe fermé

Cote d'énergie

D

Vues

Mer
Port
Urban
Rue

Meubles

Entièrement meublé

Parking

Private

Cote d'émission de CO2

D