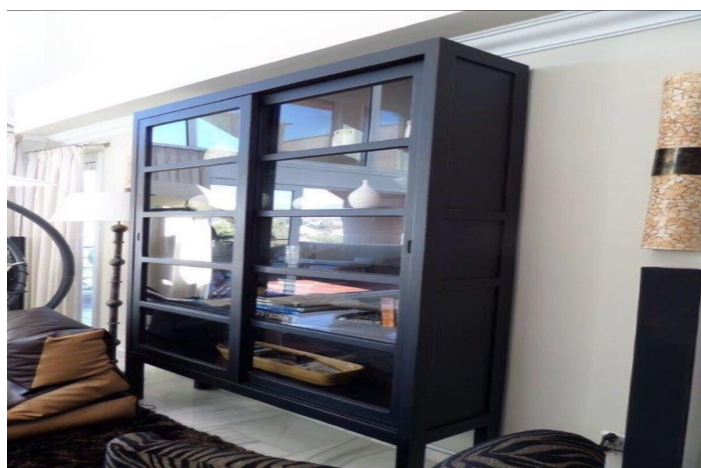




Penthouse for rent in Nueva Andalucía, Marbella

4,500 - 4,500 €

Reference: R3909421 Bedrooms: 3 Bathrooms: 2 Build Size: 393m² Terrace: 229m²





Costa del Sol, Nueva Andalucía

SPECTACULAR DUPLEX PENTHOUSE IN MAGNA MARBELLA – LUXURY, VIEWS & COMFORT Fall in love with this exceptional duplex penthouse in Magna Marbella, boasting stunning sea and mountain views. Its impressive 230 m² terrace-solarium and private heated pool create an oasis of exclusivity and relaxation. Featuring three bedrooms and two bathrooms, this home stands out for its spacious 50 m² living-dining area, opening onto a breathtaking terrace with panoramic views of La Concha Mountain and Marbella Bay. Equipped with underfloor heating throughout, hot/cold air conditioning, electric shutters, and in perfect condition. Unfurnished On the upper floor, discover a dream space: a private heated pool with panoramic views, a barbecue area, and a solarium, perfect for enjoying the privileged Costa del Sol climate. Additionally, it includes a large parking space (almost fitting two cars) and a storage room. MAGNA MARBELLA is an exclusive gated community with 24-hour security, set next to the prestigious Magna Marbella Golf Course and close to the renowned Los Naranjos, Las Brisas, and Aloha Golf Courses. Enjoy its three large swimming pools, lush gardens, and serene walking areas. Prime location: just two minutes from Puerto Banús and next to the famous Magna Café restaurant. If you're looking for elegance, privacy, and comfort, this penthouse is for you. Contact us today and come see it for yourself! We can offer two options regarding the rental guarantees: Option 1: Provide 12 months' additional guarantee deposit + 1 month's security deposit. Option 2: Provide a bank guarantee for 12 months + 1 month's security deposit + 1 month's additional guarantee deposit. Please note: The flat will be delivered unfurnished No pets allowed.



Features:

Features

Covered Terrace
Lift
Near Transport
Private Terrace
Satellite TV
Storage Room
Ensuite Bathroom
Marble Flooring
Double Glazing
24 Hour Reception
Fitted Wardrobes
Solarium
WiFi
Jacuzzi
Barbeque
Domotics
Fiber Optic

Views

Sea
Mountain
Panoramic
Country
Garden
Pool
Golf
Forest

Pool

Communal
Private

Garden

Communal
Landscaped

Utilities

Electricity

Orientation

South West

Setting

Close To Golf
Close To Port
Urbanisation
Close To Town
Close To Schools

Furniture

Not Furnished

Security

Gated Complex
24 Hour Security
Electric Blinds
Entry Phone

Category

Investment
Luxury

Climate Control

Air Conditioning
U/F Heating

Condition

Excellent

Kitchen

Fully Fitted

Parking

Underground
More Than One