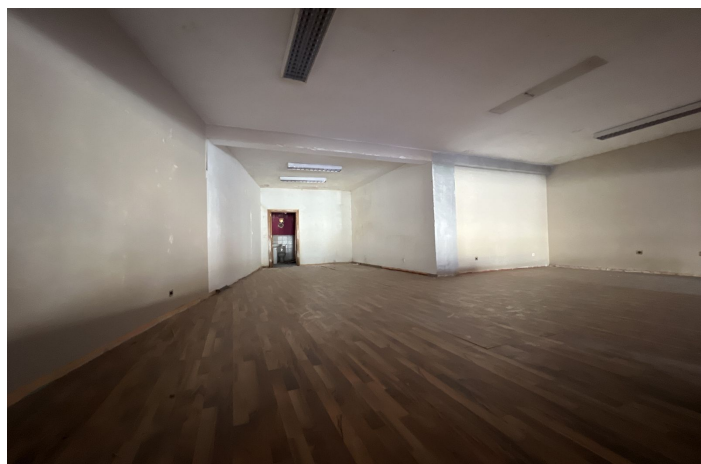
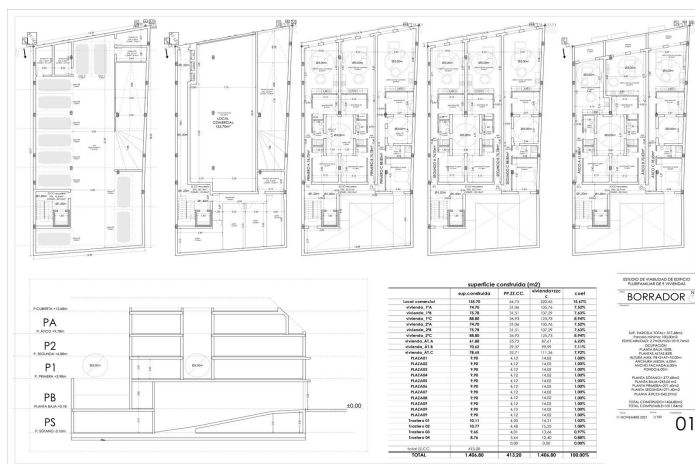


## Hostel for sale in Alhaurín de la Torre, Alhaurín de la Torre

**690,000 €**

Reference: R4282063 Plot Size: 380m<sup>2</sup> Build Size: 879m<sup>2</sup>



## Valle del Guadalhorce, Alhaurín de la Torre

\*\*\* Investment Opportunity!!! \*\*\* Building to Renovate in Avda Reyes Católicos, Alhaurín de la Torre, Málaga \*\*\* Feasibility Study Completed \*\*\* Residential Use \*\*\* Possibility of Building a Multi-Family Building with 9 Homes with Underground Parking, Storage Units and Commercial Premises \*\*\* 3 Levels above Ground (in addition to Basement and Ground Level) \*\*\* Ideal Location: 15 Minutes by Car from the Center of Malaga \*\*\* This is a great investment opportunity considering the possibilities of the building, in which it is possible to build a total of nine multi-family homes, underground parking (with nine spaces and four storage rooms) and a 156 m2 commercial area. It would be possible to build two additional levels: attic and basement. The use is residential and there is already a construction project with a feasibility study, so it could begin to be marketed within a period of six months from its purchase. Its location is ideal, since it is in one of the most central avenues of Alhaurín de la Torre, a quiet and safe municipality just ten minutes by car from the center of Malaga and the beach. For more information contact us.



## Features:

### Features

Covered Terrace  
Lift  
Near Transport  
Private Terrace  
Storage Room  
Ensuite Bathroom  
Fitted Wardrobes  
Solarium  
Utility Room  
Staff Accommodation

### Setting

Commercial Area  
Close To Shops  
Close To Town  
Close To Schools  
Town

### Utilities

Electricity  
Drinkable Water  
Telephone  
Gas

### Orientation

North  
South  
South East  
North East  
South West  
North West

### Condition

Renovation Required

### Category

Investment  
Bargain  
Cheap  
Off Plan  
Resale  
With Planning Permission

### Views

Mountain  
Panoramic  
Urban

### Security

Gated Complex  
Safe