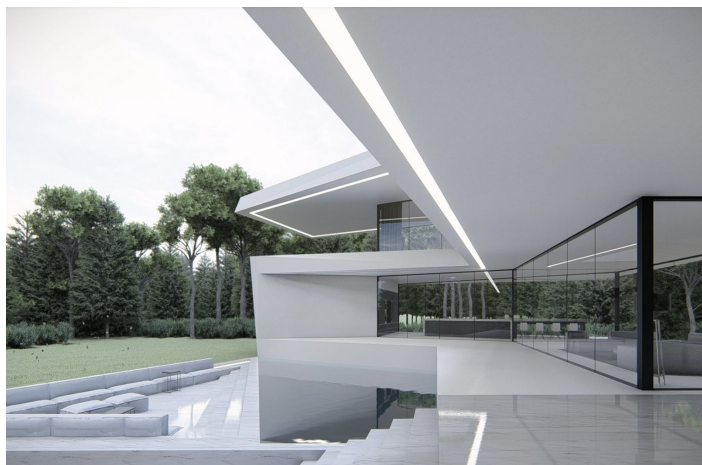




Detached Villa for sale in Benahavís, Benahavís

4.995.000 €

Reference: R4629586 Bedrooms: 7 Bathrooms: 9 Plot Size: 5.000m² Build Size: 870m² Terrace: 560m²





Costa del Sol, Benahavís

OFF PLAN – CONTEMPORARY ECOLOGICAL VILLA IN LA QUINTA, BENAHAIVIS IN URB. LOS ALMENDROS with panoramic views and views and on 6,5 km from the beach. The ground floor: entrance hall with lift, guest toilet, technical installations room, spacious living/dining room with large open plan fully fitted kitchen with Bosch appliances and separate pantry, furthermore there is on this floor a separate bedroom/study with en-suite bathroom, large, covered terraces overlooking the large 51,50 m2 heated swimming pool. On the first floor: lift, landing, master bedroom with master bathroom and large dressing room and of course a huge private terrace. A hallway leads you to another 3 bedrooms with 3 bathrooms wherefrom 1 ensuite and a terrace accessible for all 3 bedrooms. In the semi-basement, you have a huge carport with stairs with a path that leads you to the main entrance. Furthermore, the lift takes you to this floor where you find another bedroom with a bathroom ensuite, a separate apartment/bedroom and a games room. There is a completely separate flat which has a living/fitted kitchen/bedroom area, a dressing room and an ensuite bathroom. The separate flat is accessible from the garage but could also be accessed from the lift area. Construction time approx. 12 to 14 months after licenses. Pictures of bathrooms and kitchens are just examples of what they could look like, final choice will be that of the clients. Example of some of the specifications, - Interior and exterior floor tiles from GRESPANIA 600x600 - 800x800 - 1200x1200 (Color and size to choose) - Bathroom walls with COVERLAM plates (GRESPANIA) 2700X1200 (Color to choose) - Bathrooms from ROCA – VILLEROY BOCH – DURAVIT or similar - Aerothermia/airconditioning - Elevator from Schindler or similar - Underfloor heating in the full villa - Ceiling high windows with a sunken track, 5+5/chamber/6+6 - Ceiling high and 1-meter wide HPL interior doors, 30dB - Ceiling high pivot entrance door and 1,50 wide - Fully fitted kitchen with aluminum frame doors and covered with COVERLAM (Color to choose) - Island with COVERLAM 3600X1600 no visible joints (Colour to choose) - White goods from Bosch – AEG or MIELE - Heated pool with automatic cover - 20 solar panels - 3 lithium batteries of each 10kW - Car charger - Domotica We are a construction company, Key-in-Hand, that can design and construct any possibility you can think of. If you do not see a design of us that you like we design a totally new villa for you according to your ideas and input. Although we prefer to construct ecological building, we can construct from traditional construction to ecological constructions it all depends on you.



Features:

Özellikler

Kapalı teras
Kaldırmak
Özel teras
Depo
Ensuite Banyo
Çift cam
Takılmış gardıroplar
Wifi
Tenis kortu
Konuk daire
Misafirhane
Kamu hizmeti odası
Jakuzi
Barbekü
Domotik
Bodrum
Fiber optik
Hareketliliği azaltılmış kişiler için erişim

Görüşler

Dağ
Panoramik
Ülke
Bahçe
Havuz
Kentsel
Sokak

Havuz

Isıtmalı
Özel

Bahçe

Özel
Kolay Bakım

Kamu hizmetleri

Elektrik
İçilebilir su
Telefon
Fotovoltaik güneş panelleri
Güneş Su Isıtma

Oryantasyon

Doğu
Batı
Güney Doğu
Güney Batı

Ayar

Golf'e yakın
Kentleşme
Dükkanlara Yakın
Şehre yakın
Okullara yakın

Mobilya

İsteğe bağlı

Güvenlik

Alarm sistemi
Giriş telefonu
Güvenli

Kategori

Tatil Evleri
Yatırım
Golf
Lüks
Plan Kapalı
Modern

İklim kontrolü

Klima
Soğuk klima
Sıcak klima
Şömine
U/F Isıtma
U/f/h banyo

Durum

Yeni İnşaat

Mutfak

Tam takılmış

Otopark

Yeraltı
Garaj
Özel
Kapalı
Açık
Birden fazla