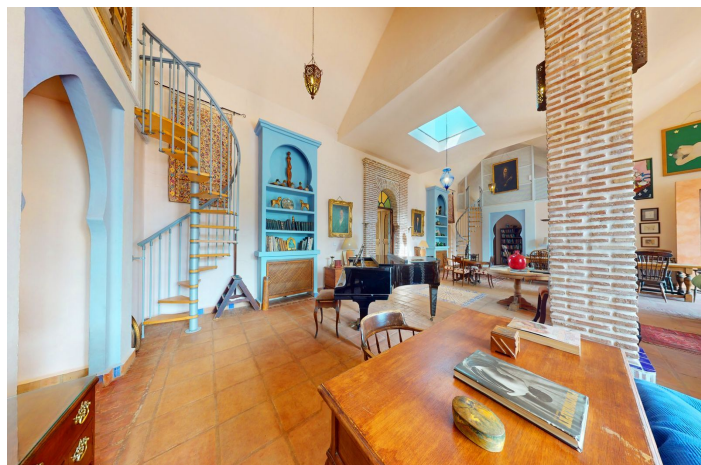




Finca - Rural Estate en venta en Gaucín, Gaucín

1.995.000 €

Referencia: R4666771 Dormitorios: 7 Baños: 6 Terreno: 164.353m² Construido: 780m²





Serranía de Ronda, Gaucín

📍 A captivating blend of Moorish and Andalusian architecture defines this remarkable Country Estate, nestled near the highly sought-after white village of Gaucín in Andalucía, Southern Spain! Presenting a BEAUTIFUL Moorish-style villa with MAGNIFICENT countryside views! Featuring a STUNNING swimming pool (20m x 5m) alongside a staff apartment & barn! Situated on a VERY LARGE PRIVATE PLOT (40 acres), perfectly suited for equestrian use! Boasting a PLENTIFUL WATER SUPPLY for your peace of mind! This exceptional property offers a unique and majestic villa, exquisitely designed to capture panoramic views of picturesque valleys, cork forests, and distant mountains. Just a short 15-minute drive from the enchanting 'White Village' of Gaucín! Nestled on a prominent private plateau within a sprawling 40-acre fully fenced finca, this villa ensures unparalleled security, privacy, and tranquility. Surrounded by nature, with adjacent hills belonging to the property and protected mountain sides nearby, this location is a haven for equestrian enthusiasts. Facing south, this architect-designed villa is flooded with natural light and features a spacious double-height living room that seamlessly blends Andalusian charm with authentic Moorish character. The main living areas are conveniently located on one level, with additional mezzanine areas accessible via spiral staircases. Finished with meticulous attention to detail, including arched doorways, original tiling, and antique wood doors. Access to the property is via a short drive along a track from the road between Gaucín & El Colmenar. Upon arrival, you'll be greeted by impressive antique wooden entrance doors, leading into a beautiful entrance hall flanked by ensuite guest bedrooms. The villa's magnificent living room, subdivided by pillars, offers distinct living areas, including a cozy sitting area with a large open fireplace, an adjacent dining area, and a separate kitchen. French doors open onto a terrace boasting spectacular views, perfect for alfresco dining and entertaining. The villa is surrounded by rustic landscaped gardens featuring a variety of palm trees and cypresses. A large terrace connects the main house to the marvelous pool area below, complete with a fully retractable roof and a pool house doubling as a gym. Set well apart from the main house, within its own fenced grounds, you'll find a staff/guest apartment and barn, offering modern amenities and serene views. The barn, equipped with water and electricity, is versatile and could be utilized for various purposes. Additional features include mains water & electricity, a 210,000-liter water storage deposit, hot water via a gas boiler, water softening system, WIFI internet, central heating & air-conditioning, covered parking, and more. Don't miss this opportunity to experience the epitome of luxury living amidst the serene beauty of Southern Spain! Contact us today for more details. More details: - Mains water & electricity - 210,000 litre water storage deposit (water is collected from roofs etc) - Hot water via gas boiler (solar panels for heating/hot water could be installed) - Water softening system - Circulation pump for hot water - Power showers - Reverse osmosis drinking water system - WIFI internet - Central heating & air-conditioning throughout (auxiliary boiler if needed) - Double glazed windows - Handcrafted insulated doors - Pool heating by heat pump using night rate electricity - Covered parking for 2 cars + open parking area - Large septic tank - All electricity cables underground with manholes every 25m - Suitable for equestrian use - Good rental history - All furniture available (incl some antiques) - Train station Algeciras-Ronda approx.15 mins away



Características:

Características

Terraza Cubierta
Terraza Privada
TV Satélite
Trastero - Almacén
Baño En-Suite
Doble acristalamiento
Armarios Empotrados
WiFi
Gimnasio
Apptmnt. Huéspedes
Casa de Huéspedes
Lavadero
Alojamiento del personal
Establos

Vistas

Vistas a Montaña
Vistas Panorámicas
Vistas al Campo

Piscina

Con Calefacción
Piscina Privada

Jardín

Jardín Privado
Jardín Paisajístico
Jardín de fácil mantenimiento

Categoría

Lujo
Reventa

Orientación

Sur

Posición

Campo
Cerca de los Bosques

Muebles

Opcionales

Aparcamiento

Parking Privado
Parking Cubierto

Climatización

Aire Acondicionado
A/A Frio
Chimenea
Calefacción Central.
Baño

Estado

Excelente estado de conservación

Cocina

Cocina Equipada

Servicios Públicos

Electricidad
Agua Potable