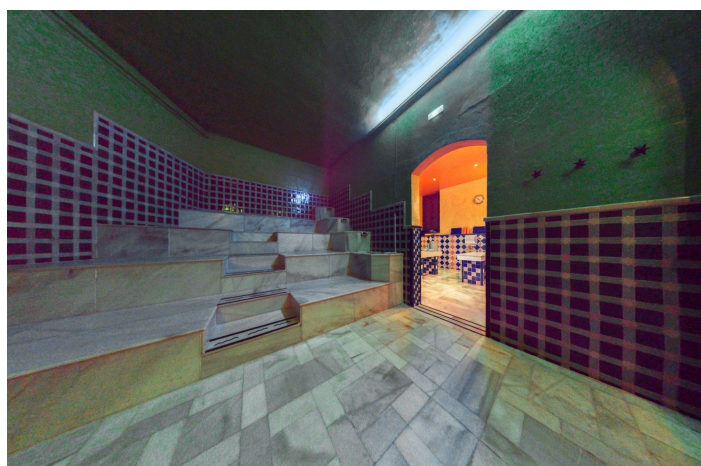
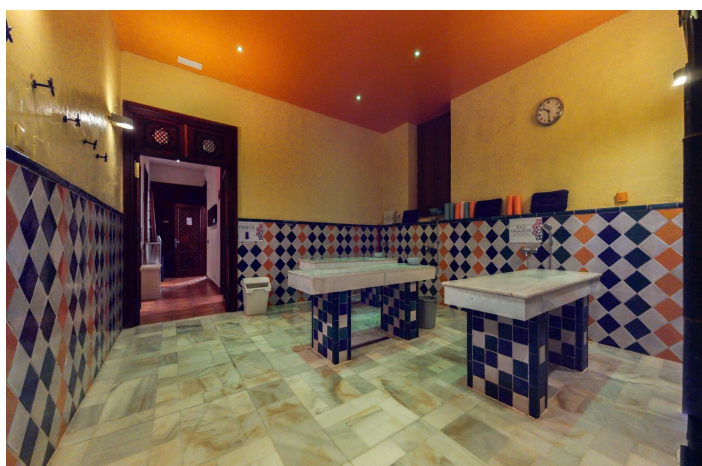
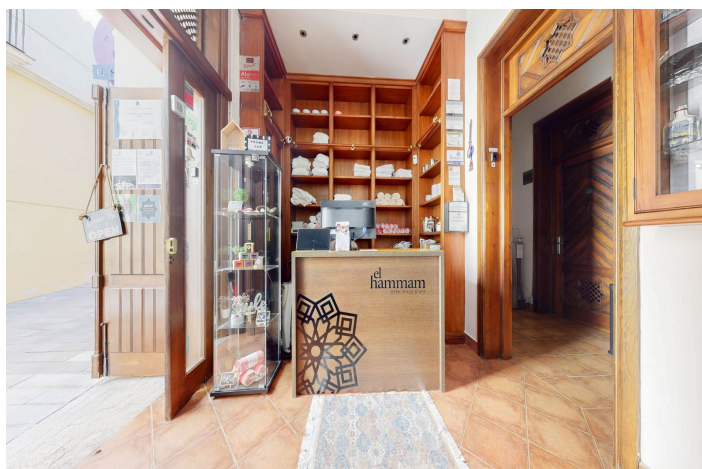




## Entreprise à vendre à Málaga, Málaga

1 395 000 €

Référence: R4249780 Bain: 4 Terrain: 179m<sup>2</sup> Construite: 308m<sup>2</sup>





---

## Costa del Sol, Málaga

Are you looking for a unique property in the centre of Málaga? We have the perfect building for sale, located in the heart of the city. With a surface area of approx. 500m<sup>2</sup> divided into 4 floors including the roof terrace and with the possibility of an extension up to 700m<sup>2</sup>, this impressive 18th century building, completely restored and refurbished, is now available for sale and comes with a very special feature - a Hamman. Located in the historic centre of Malaga, in the old Jewish quarter and within the circuit of the Picasso Museum, the Plaza de la Merced, the Cathedral, etc... the building itself is also a true masterpiece. With spacious marble hot rooms, reception, changing rooms, massage, Yoga and Pilates rooms, VIP lounge with bathroom and kitchen, high ceilings and plenty of natural light, it has been designed with comfort and style in mind. The modern and elegant finishes, combined with traditional elements, create a warm and welcoming atmosphere. There is also a large rooftop terrace with panoramic views of the city. The Hamman is a type of traditional steam bath common in many cultures, the perfect place to unwind and relax. With its warm atmosphere and soothing steam, you can relieve stress and rejuvenate your mind, body and soul. With all there is to see and do in the city of Malaga, whether you are looking to continue a successful business for over 20 years, or an investment property in one of the most sought after areas of Malaga, this building is the perfect opportunity for both residential and commercial purposes. Don't miss this unique opportunity to own such a special property, a piece of Malaga's history! Contact us to arrange a viewing and discover the endless possibilities that are waiting for you.



## Spécification:

### Caractéristiques

Près du transport

Terrasse privée

Salle de stockage

Sol en marbre

Solarium

Wifi

Parquet

Près de la mosquée

Près de l'église

Accès aux personnes à mobilité réduite

### Paramètre

Zone commerciale

Près du port

Proche des magasins

Ville

Près de Marina

### Sécurité

Système d'alarme

Safe

### Cote d'énergie

G

### Orientation

Sud-Est

### Condition

Récemment rénové

Récemment rénové

### Services publics

Électricité

Eau potable

Téléphone

Chauffage de l'eau solaire

### Cote d'émission de CO2

G

### Vues

Panoramique

### Meubles

Optional

### Catégorie

Investissement