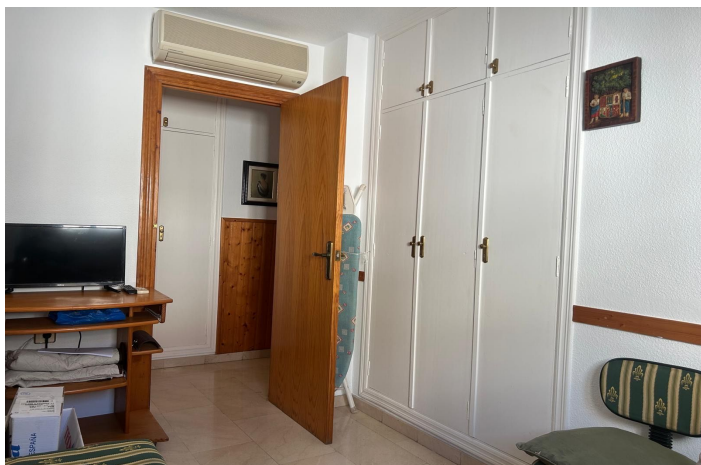




## Penthouse for sale in Nueva Andalucía, Marbella

**371,100 €**

Reference: R4956715 Bedrooms: 3 Bathrooms: 1 Build Size: 70m<sup>2</sup> Terrace: 15m<sup>2</sup>





## Costa del Sol, Nueva Andalucía

Discover your new home in the heart of Nueva Andalucía! This magnificent penthouse offers spectacular views of the sea from its large 18 square meter terrace, perfect for enjoying unforgettable sunsets. With 90 m<sup>2</sup> built and 86 m<sup>2</sup> useful, this home has three bedrooms, a bathroom and the possibility of adding another. Natural light floods every corner thanks to its south-east orientation, and its privileged location places you close to all essential services such as supermarkets, pharmacies and schools. Gated community with swimming pool and paddle tennis courts. The apartment is located on the fourth floor of a building with an elevator, and is designed to be accessible for people with reduced mobility. In addition, it is sold fully furnished, ready to move into. It includes a garage space and a storage room, which adds convenience to your daily life. Enjoy sunny days in the community pool or stroll through the garden. With a C energy rating, this penthouse is an efficient and sustainable option. Don't miss the opportunity to live in a place where the sea is your closest neighbor! Penthouse, Nueva Andalucía, Costa del Sol. 3 Bedrooms, 1 Bathroom, Built 70 m<sup>2</sup>, Terrace 15 m<sup>2</sup>. Setting : Commercial Area, Close To Shops, Close To Sea, Close To Schools, Urbanisation. Orientation : South West. Condition : Excellent. Pool : Communal. Views : Sea, Mountain, Panoramic, Urban. Features : Covered Terrace, Lift, Fitted Wardrobes, Near Transport, Private Terrace, Tennis Court, Storage Room, Access for people with reduced mobility. Furniture : Fully Furnished. Kitchen : Fully Fitted. Parking : Underground, Garage. Utilities : Electricity, Drinkable Water. Category : Holiday Homes, Investment.



## Features:

### Features

Covered Terrace  
Lift  
Near Transport  
Private Terrace  
Storage Room  
Fitted Wardrobes  
Tennis Court  
Access for people with reduced mobility

### Setting

Commercial Area  
Urbanisation  
Close To Sea  
Close To Shops  
Close To Schools

### Furniture

Fully Furnished

### Utilities

Electricity  
Drinkable Water

### Orientation

South West

### Condition

Excellent

### Kitchen

Fully Fitted

### Category

Holiday Homes  
Investment

### Views

Sea  
Mountain  
Panoramic  
Urban

### Pool

Communal

### Parking

Underground  
Garage