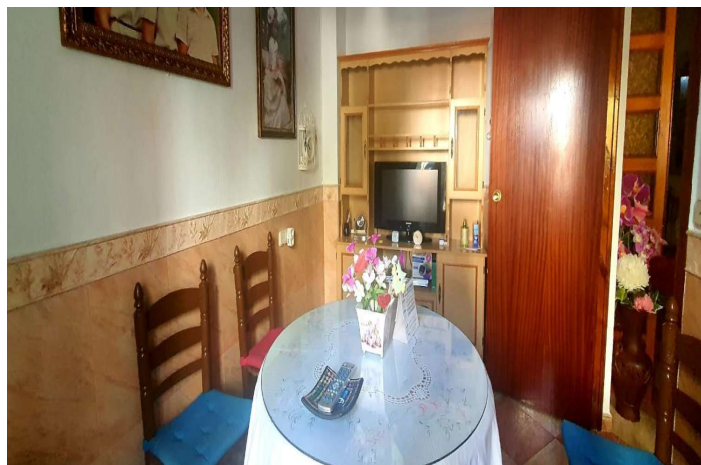
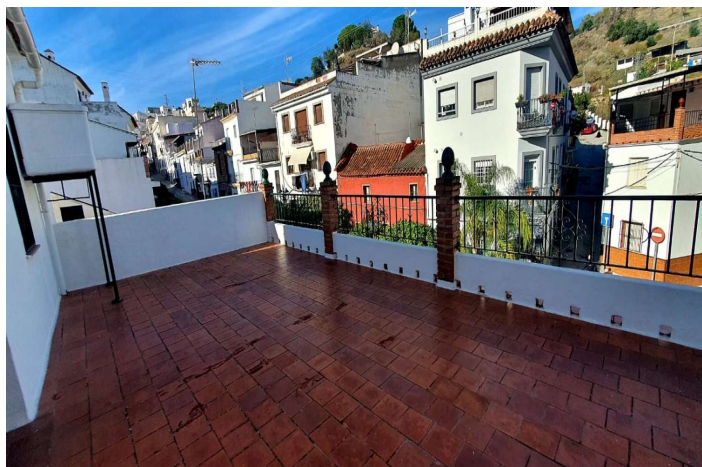
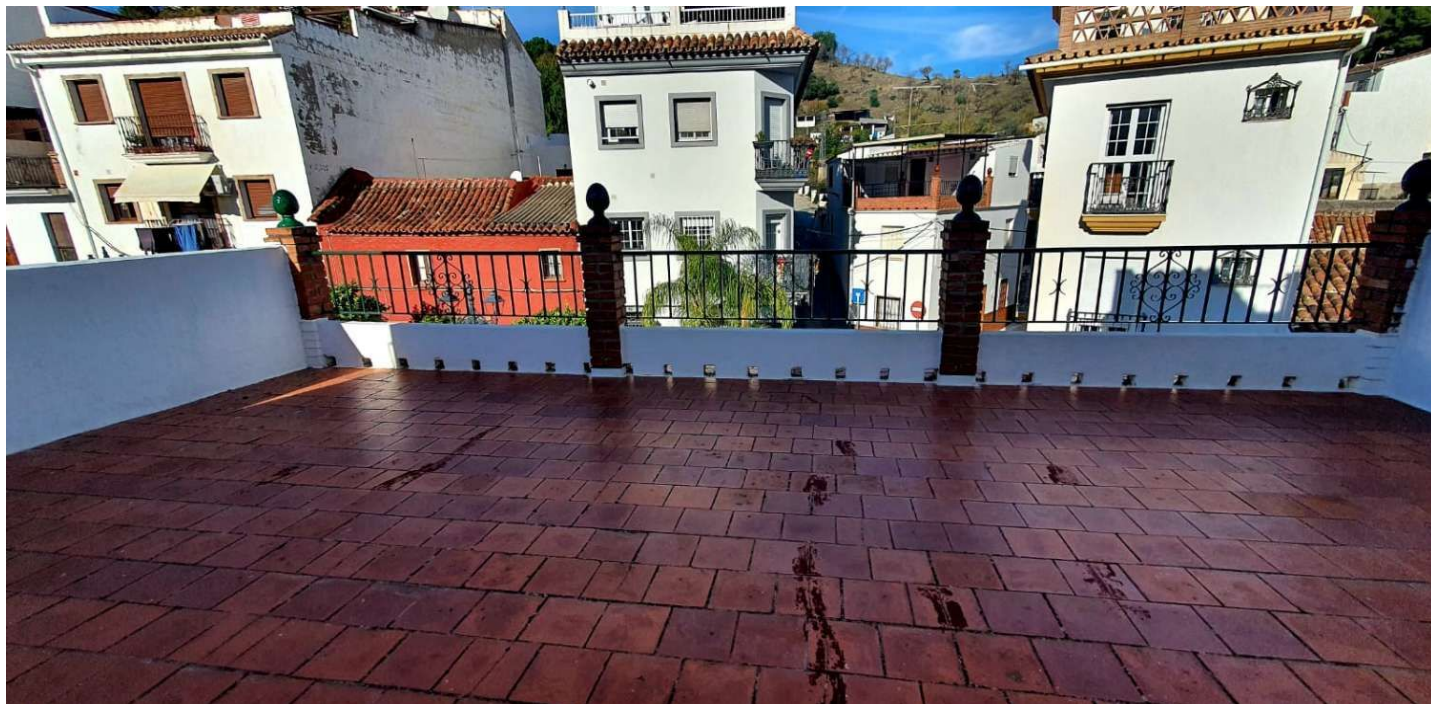




Geschakelde Woning te koop in Monda, Monda

283.000 €

Referentie: R4729213 Slaapkamers: 6 Badkamers: 2 Perceelgrootte: 240m²





Sierra de las Nieves, Monda

We present this large townhouse for sale in the centre of Monda (Málaga), 15 km. from Marbella!! It is located in the centre of the town, close to the Town Hall, close to all the services offered by the town (schools, banks, shops, etc.). New house that has 240 m2 distributed over 3 floors, with a total of 6 bedrooms with fitted wardrobes and 2 bathrooms. 1st floor: 2 living rooms, a living room, 2 kitchens, a bathroom and access to a large freshly painted patio with garden and plants. 2nd floor: 5 bedrooms and a bathroom. Balcony from corner to corner of the house. 3rd floor: 1 bedroom with two terraces. The largest terrace has views of the Castle and could be used as an apartment. The views from the house are wonderful, and from the 3rd floor they are even better! They encompass the rooftops, houses and streets of the centre, the hills surrounding Monda and on one of these, the beautiful building of the Hotel El Castillo, built on the ruins of a 9th century Arab fortress. There is no community fee and there is the possibility of a parking space 200 meters from the house. Monda is a municipality located in the province of Málaga, Andalusia, Spain. This town is home to the School of Fashion Design and Manufacturing at the Marbella Design Academy in the United Kingdom by the University of Bedfordshire. It is an excellent property for those who want to be 25 minutes from Marbella without giving up the tranquility and beauty of the traditional Andalusian villages. Malaga and the airport are 40 minutes away. Take advantage of this opportunity and contact us to visit this wonderful property.



Kenmerken:

Extra's

Nabij vervoer

Privé Terras

Berging

Meubilering

Ongemeubileerd

Ligging

Dicht bij winkels

Dichtbij scholen

Stad

Categorie

Golf

Bestaande bouw

Huidige Staat

Goede conditie