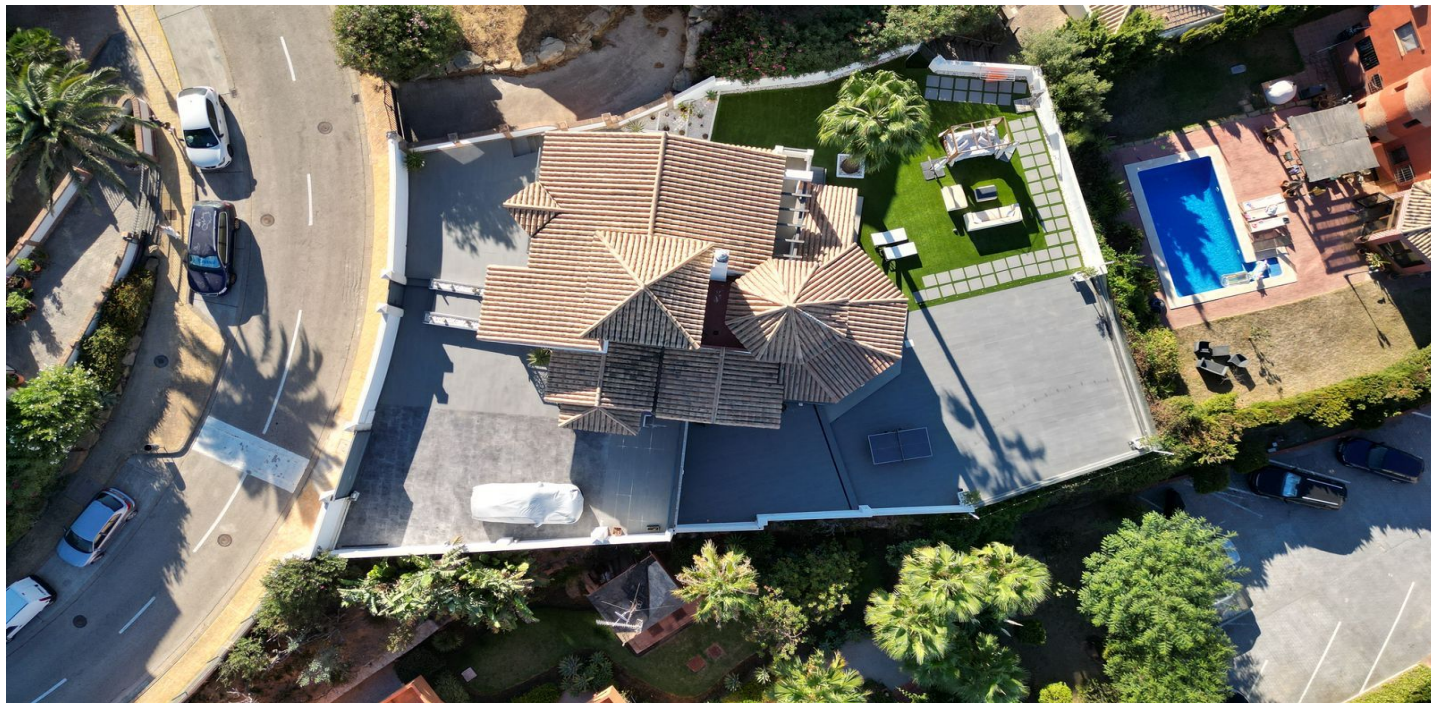




Abstandsvilla zum Verkauf in La Línea de la Concepción, Campo de Gibraltar

760.000 €

Referenz: R4888501 Schlafzimmer: 4 Badezimmer: 5 Grundstücksgröße: 800m² Garten: 292m² Terrasse: 200m²





Costa de la Luz, La Línea de la Concepción

Villa on the seafront of La Alcaidesa. Its impressive views are focused on the La Alcaidesa Lighthouse, the sea and in the background the Rock of Gibraltar. Its almost 300 sqm are distributed over 4 floors. The entrance leads to a hall from which you enter a separate kitchen, a guest toilet and a living room with access to the terrace that offers the best views of the lighthouse and the sea. On the first floor there is a large bedroom of about 50 sqm with a dressing room, en-suite bathroom and its own terrace... The ground floor consists of 2 double bedrooms with a bathroom, one of which has direct access to the garden. The -1 floor has a splendid cinema room, with a screen and 6 large leather armchairs, a room that could easily be converted into a 4th bedroom. At the level of the garden, you finally access the wine cellar area, a large space with a kitchen, dining room, bar, toilet and pool table, the ideal place for meetings with friends and family. The garden, with artificial grass, offers the possibility of building a spacious pool of about 4x8 m2 and also has a porch with barbecue. The design of the house is elegant and modern, characterized by the luminosity in each and every one of its rooms. It is worth visiting, for its location, its perfect state of conservation and views. For dog lovers it is also the ideal place, not only is it located a few meters from the beach but there is very close, about 100 meters away, a landscaped park, with benches to walk and enjoy the views of this impressive coast.



Eigenschaften:

Merkmale

Überdachte Terrasse
Private Terrasse
Lageraum
Badezimmer
Einstellungsschränke
W-lan
Spielzimmer
Bar
Grill
Keller

Ansichten

Meer
Panorama
Garten
Golf
Strand

Pool

Gemeinschaft

Versorgungsunternehmen

Strom
Trinkbares Wasser
Telefon
Gas

Orientierung

Süden

Einstellung

In der Nähe des Meeres
Strand

Garten

Privat
Einfache Wartung

Kategorie

Strand
Golf
Zeitgenössisch

Klimakontrolle

Vor installierte a/c

Zustand

Exzellent

Parken

Privat