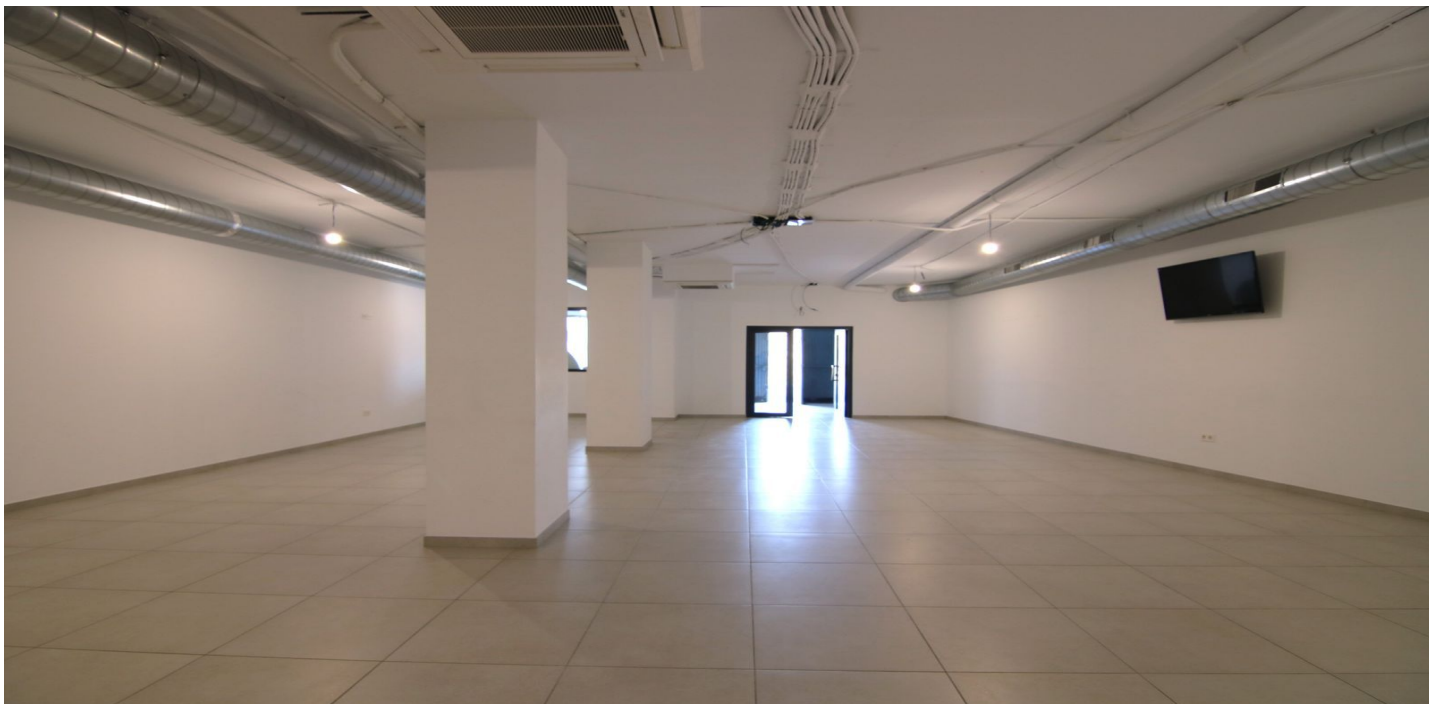




## Local comercial en venta en Coín, Coín

243.900 €

Referencia: R4639921    Dormitorios: 1    Baños: 2    Construido: 199m<sup>2</sup>





---

## Valle del Guadalhorce, Coín

Magnificent premises situated in Coín, above the Alameda square, close to public parking. It is completely refurbished from year 2022. New installations, and complete soundproofing. Only 20 minutes from Malaga, Marbella or Fuengirola and situated in a good area, with parking and good access, spaciousness.... The local is adapted with access for people with reduced mobility, adapted for any business, previously it has been a place for events and parties, etc.... Possibility of change of use to housing, to take out two flats of 100 square meters.



## Características:

### Características

Cerca de Transporte

TV Satélite

Lavadero

Sótano

Access for people with reduced mobility

### Vistas

Vistas a Jardín

Vistas a Calle

### Muebles

Opcionales

### Servicios Públicos

Electricidad

Agua Potable

### Orientación

Orientación Suroeste

### Posición

Cerca de Tiendas

Cerca de Colegios

Pueblo

### Cocina

Cocina No Equipada

### Climatización

Aire Acondicionado

A/A Caliente

### Estado

Excelente estado de conservación

Reformado Recientemente

### Seguridad

Recinto Cerrado