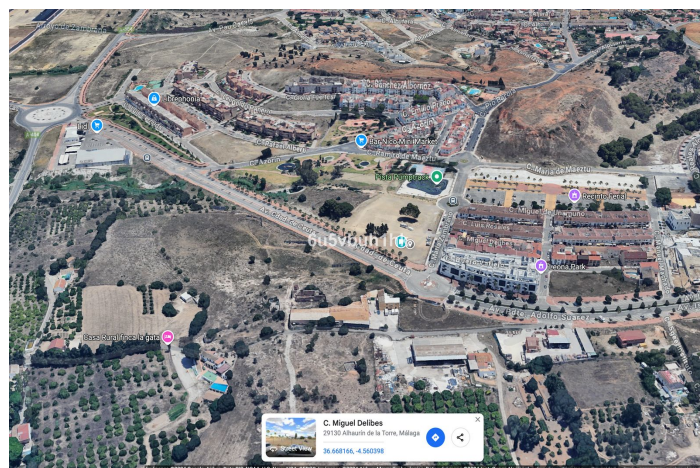
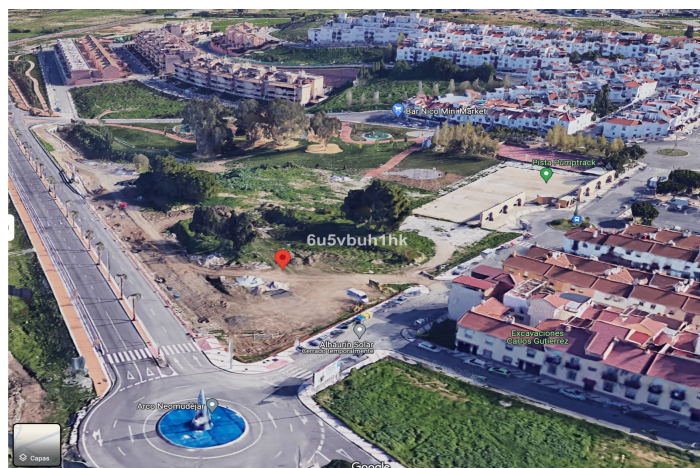
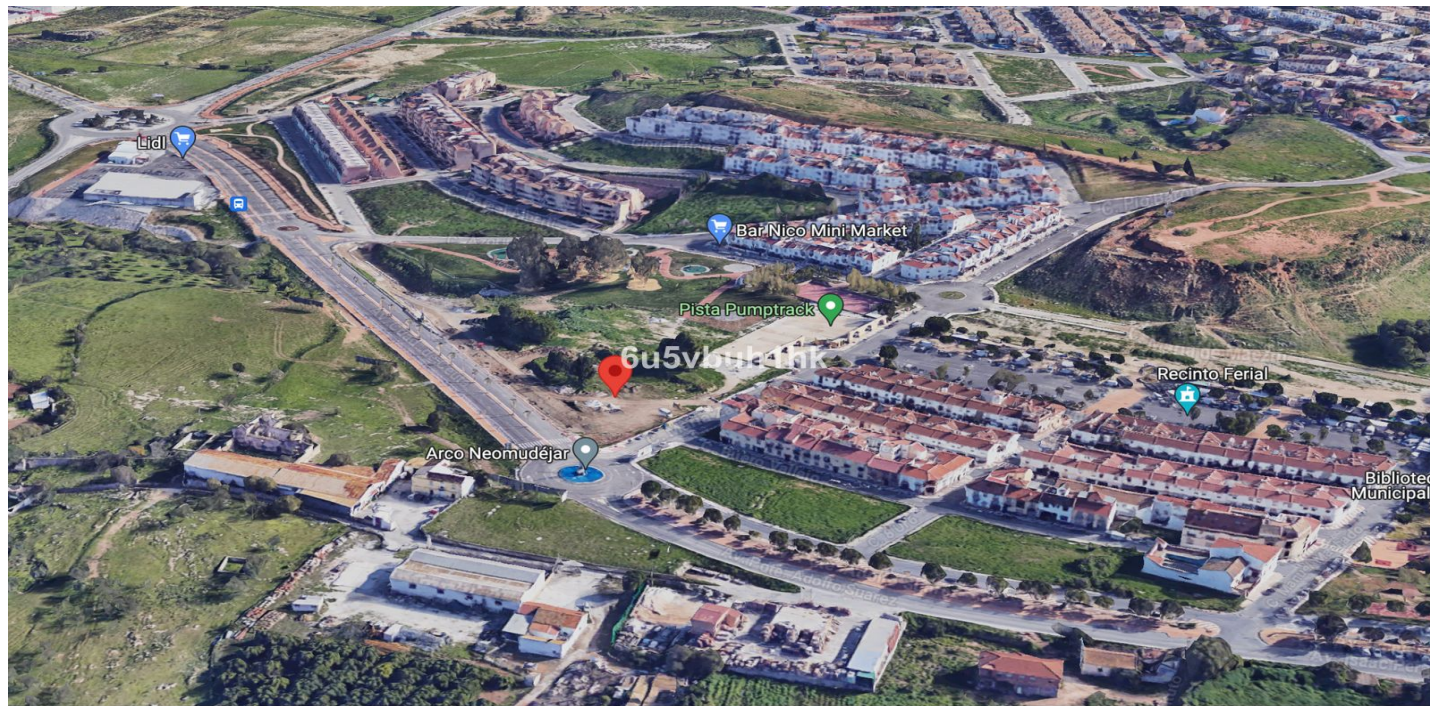




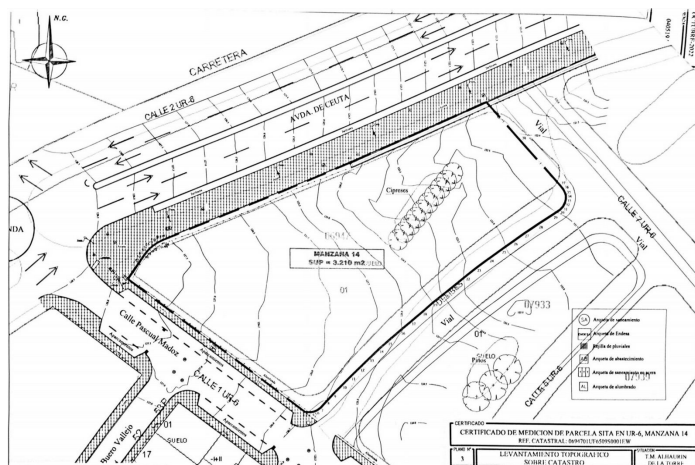
# Atterrir à vendre à Alhaurín de la Torre, Alhaurín de la Torre

4 750 000 €

Référence: R4905631 Terrain: 3 210m<sup>2</sup>









## Valle del Guadalhorce, Alhaurín de la Torre

Imagine a highly profitable residential project in an unbeatable location. This 3,210 m<sup>2</sup> plot, located in the N4-3 subzone of Alhaurín de la Torre, Málaga, offers all the potential you need: a maximum buildable area of 8,667 m<sup>2</sup>, ideal for creating 96 modern homes, each with its own individual parking space, meeting all current regulations. According to the applicable regulations in Alhaurín de la Torre and Article 94 of the adapted PGOU, compensation must be paid for the additional 41 dwellings 55 permitted. This payment is intended to cover the increase in public spaces or necessary services. The exact amount depends on the rates established in the Municipal Plenary Agreement of February 15, 2019. To determine the specific cost, you should consult directly with the City Council or review the referenced regulations. The land allows for 100% occupancy on the ground floor and 85% on upper floors, with a maximum height of 10 meters (ground floor plus two additional levels), including the option to incorporate attics. This focuses on efficiency, with average home sizes of 90 m<sup>2</sup>, perfectly aligned with current market demands. Additionally, space for 96 parking spots is guaranteed, a key feature that adds value to the project. Located in Alhaurín de la Torre, one of the most sought-after areas in Málaga, this plot represents a strategic opportunity in a high-demand market. A functional and attractive design that maximizes investment, complies with regulations, and enhances the aesthetic standard of the development. If you are looking for your next standout project, now is the time. Contact us for more information and project planning.



## Spécification:

### Caractéristiques

Près du transport

### Vues

Panoramique

Pays

### Paramètre

Proche des magasins

Près de la ville

Près des écoles