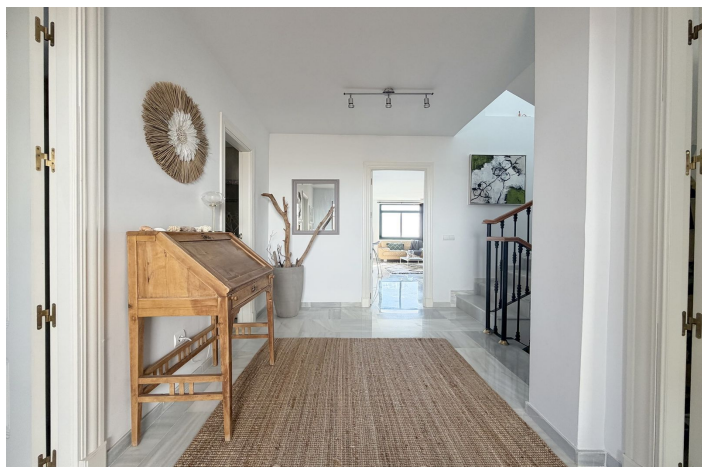




## Halvfack till salu i Benalmadena Pueblo, Benalmádena

629 000 €

Referens: R5296219   Sovrum: 3   Badrum: 2   Bygga: 122m<sup>2</sup>   Terrass: 188m<sup>2</sup>





---

## Costa del Sol, Benalmadena Pueblo

Magnificent semi-detached house located in the exclusive Mirador de Rancho Domingo residential area, in Benalmádena Pueblo, a recently renovated property with a modern style offering stunning panoramic views of the sea and the mountains, set in a peaceful and well-connected residential environment. The property is distributed in a very functional way. On the main floor, there are two bedrooms, a full bathroom, and a spacious living area with a recently renovated open-plan kitchen, featuring a modern design and direct access to a covered terrace, from which you can enjoy panoramic sea and mountain views. On the lower floor, you will find the master bedroom, with an en-suite bathroom and direct access to a terrace with a private 90 m<sup>2</sup> garden, an ideal space for relaxing, entertaining, or enjoying outdoor living. This level also includes a storage room and a fully enclosed private garage with direct access to the house, providing maximum comfort and security. On the top floor, the property boasts a spectacular 60 m<sup>2</sup> solarium, offering open panoramic views of the sea and the mountains. All terraces are enclosed with glass curtains, including part of the solarium, allowing these outdoor spaces to be enjoyed all year round, even during the winter months. The house has been renovated with a modern and elegant style, combining comfort, design, and functionality throughout. The residential complex features a communal swimming pool and beautifully maintained gardens, within a quiet and secure environment. The location is excellent: just 10 minutes by car from the beach and 15 minutes from Málaga International Airport, with easy access to all kinds of amenities such as restaurants, shops, pharmacies, health centre, sports facilities, and schools. An ideal property as a permanent residence or holiday home, offering comfort, style, and truly exceptional sea and mountain views.



## Funktioner:

### Drag

Täckt terrass  
Privat terrass  
Förråd  
Badrum  
Marmorgolv  
Solarium

### Åsikter

Hav  
Fjäll  
Panorama

### Slå samman

Gemensam  
**Säkerhet**  
Gated complex

### Orientering

Sydöst

### Miljö

Nära golf  
Urbanisering  
Nära butiker  
Nära skolor

### Kök

Fullmonterad

### Parkering

Garage  
Privat  
Täckt

### Klimatkontroll

Luftkonditionering

### Skick

Excellent

### Trädgård

Privat