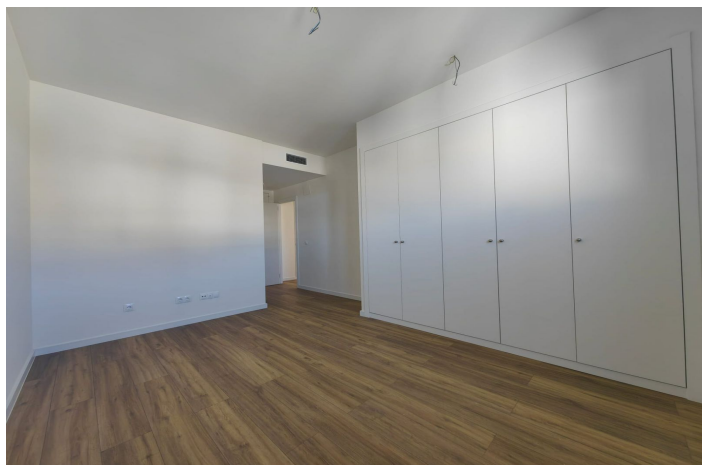




## Penthouse for sale in Estepona, Estepona

545,000 €

Reference: R5295277 Bedrooms: 2 Bathrooms: 2 Build Size: 120m<sup>2</sup> Terrace: 35m<sup>2</sup>





---

## Costa del Sol, Estepona

Brand New South-Facing Penthouse with Panoramic Sea & Mountain Views – Habitat Valle Romano Discover this stunning, brand new penthouse located in the contemporary development of Habitat Valle Romano, set within the prestigious Valle Romano Golf Estate. Designed for modern Mediterranean living, this spacious property offers an exceptional blend of comfort, style, and lifestyle amenities. The penthouse features two generous bedrooms and two bathrooms, including a master suite with en-suite bathroom, finished to a high standard throughout. The bright open-plan kitchen, dining, and living area flows seamlessly onto an impressive south-facing L-shaped terrace, ideal for outdoor dining, entertaining, or simply relaxing while enjoying panoramic views of the Costa del Sol coastline, surrounding mountains, and the Mediterranean Sea. Residents benefit from a secure and private environment, with underground parking and a storage room included. The development offers outstanding communal facilities, including a large outdoor swimming pool, fully equipped gym, communal work and entertainment space with a fitted kitchen, outdoor fitness circuit with exercise machines, chill-out areas, and a pétanque court—all designed to enhance everyday living. Valle Romano enjoys a privileged location, just 10 minutes by car from Estepona Old Town, the marina, beaches, and all local amenities, while being surrounded by nature and golf. This penthouse is ideal as a family holiday home, a full-time residence, or a high-potential investment property in one of Estepona's most up-and-coming areas



## Features:

### Features

Lift  
Private Terrace  
Storage Room  
Ensuite Bathroom  
Double Glazing  
Fitted Wardrobes  
Gym  
Basement  
Fiber Optic  
Access for people with reduced mobility

### Views

Sea  
Mountain  
Panoramic  
Country  
Garden  
Golf

### Pool

Communal  
Children`s Pool

### Garden

Communal  
Landscaped  
Easy Maintenance

### Utilities

Electricity  
Drinkable Water

### Orientation

South

### Setting

Close To Port  
Urbanisation  
Close To Sea  
Close To Shops  
Close To Town  
Close To Schools

### Furniture

Not Furnished

### Security

Gated Complex  
Entry Phone

### Category

Holiday Homes  
Investment  
Golf  
Luxury  
Resale  
Contemporary

### Climate Control

Air Conditioning  
Cold A/C

### Condition

Excellent  
New Construction

### Kitchen

Partially Fitted

### Parking

Underground  
Private