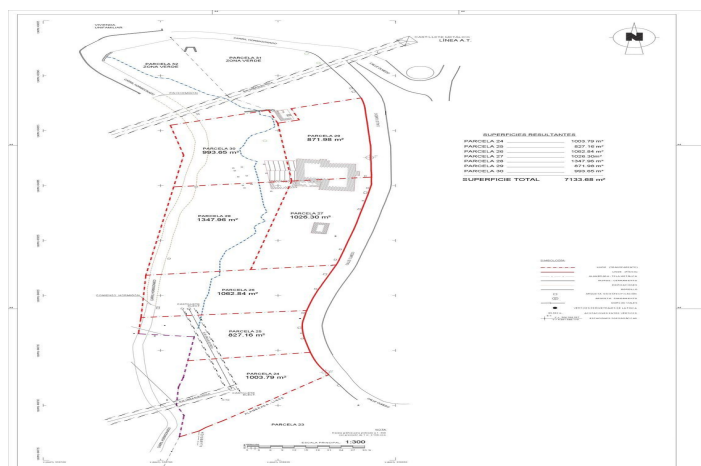


1,300,000 €

A wide-angle, high-angle photograph of a coastal town, likely in the Canary Islands, viewed from a hillside. The town features dense, low-rise buildings with terracotta roofs, interspersed with greenery. The sea is a vibrant blue, extending to the horizon under a sky filled with large, white, fluffy clouds. A small, dark object, possibly a ship, is visible on the horizon line.





Costa del Sol, Benalmádena

Opportunity for Developers, a plot of 7.200 m² for 18 single-family homes, with a buildable ceiling of 2.500m²; being 7 independent plots and exclusive mode in Benalmádena, idyllic setting of the Costa del Sol, south facing, surrounded by the magnificent setting of the village of Benalmádena, with spectacular sea views. They are sold as a whole of the 18 not separately. It offers architectural study with detailed cost study that guarantees the investment and cost reduction through industrialized housing.



Features:

Orientation

South

Views

Sea

Mountain

Setting

Beachside

Close To Golf

Close To Sea

Close To Town

Town

Close To Forest

Marina

Close To Marina

Category

Investment

Bargain

Distressed

Luxury

Resale