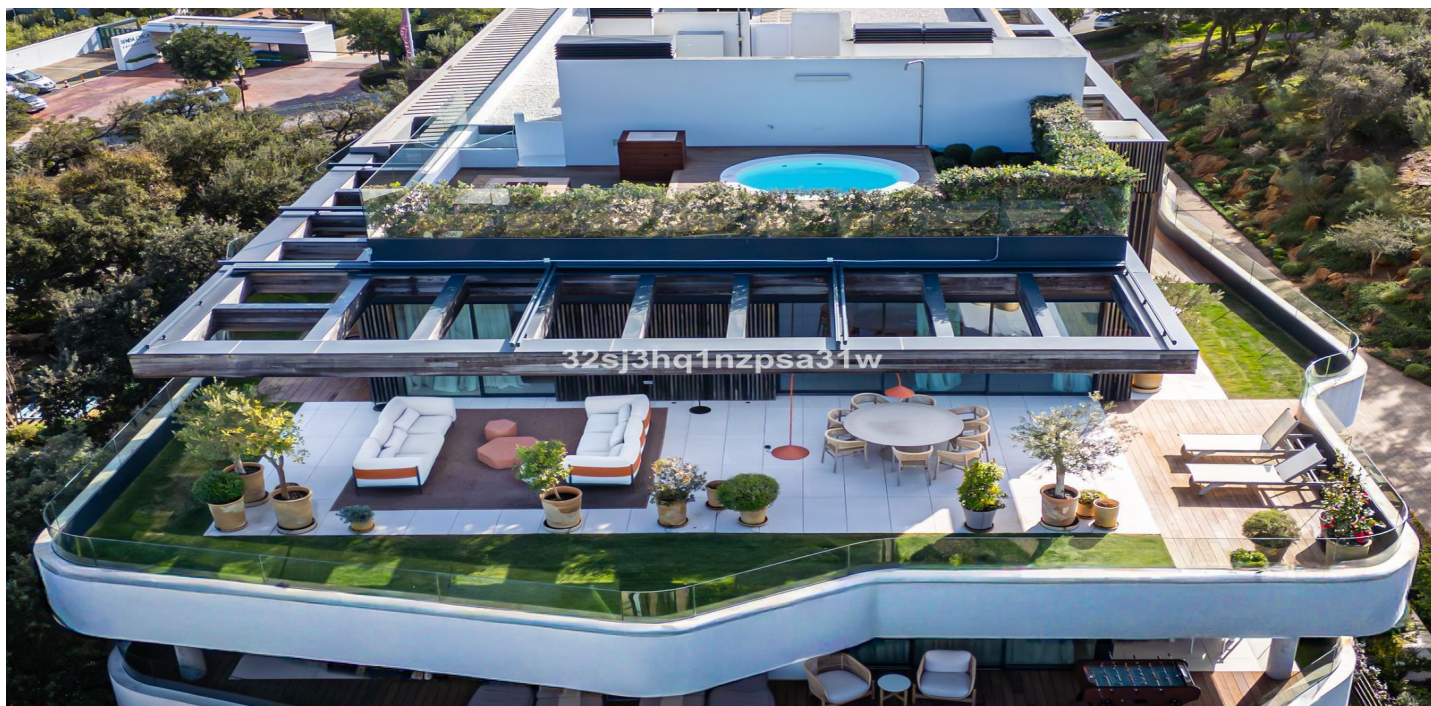




## Penthouse for sale in Sotogrande, Sotogrande

2,950,000 €

Reference: R5289580 Bedrooms: 4 Bathrooms: 5 Build Size: 248m<sup>2</sup> Terrace: 346m<sup>2</sup>





## Costa de la Luz, Sotogrande

Exceptional penthouse in Village Verde - La Reserva Sotogrande This exceptional four-bedroom penthouse in Village Verde represents the pinnacle of luxury living in La Reserva de Sotogrande. The residence features 209 m<sup>2</sup> of sophisticated internal space and a monumental 346 m<sup>2</sup> wrap-around terrace and solarium, including a private plunge pool and firepit. Each spacious bedroom includes a private en-suite bathroom, complemented by a guest powder room, laundry area, and direct lift access. This brand-new home is a benchmark for sustainability, holding a prestigious A/A Energy Certificate and meeting rigorous BREEAM and WELL standards. Residents enjoy an unrivaled lifestyle within a secure, car-free community featuring multiple outdoor pools, a professional indoor lap pool, and a signature sandy-bottom pool. Wellness is central to the community, with a state-of-the-art gym, spa, sauna, and private gastro-bar. The immense popularity of the adjacent La Reserva Club provides further access to world-class golf and "The Beach"—Spain's first hillside private beach lagoon. Sotogrande remains one of Europe's most discreet and prestigious enclaves, attracting an elite international clientele to its vibrant Marina, the legendary fairways of Valderrama, and the world-class Santa María Polo Club. Families benefit from the nearby acclaimed Sotogrande International School, while the location offers effortless connectivity to Gibraltar Airport (25 mins) and Málaga Airport (60 mins). This vertical villa offers the perfect balance of Mediterranean luxury and privacy.



## Features:

### Features

Covered Terrace  
Lift  
Near Transport  
Private Terrace  
Satellite TV  
Storage Room  
Ensuite Bathroom  
Double Glazing  
24 Hour Reception  
Fitted Wardrobes  
Solarium  
WiFi  
Gym  
Sauna  
Paddle Tennis  
Tennis Court  
Jacuzzi  
Domotics  
Restaurant On Site  
Near Mosque  
Near Church  
Fiber Optic  
Access for people with reduced mobility

### Views

Sea  
Mountain  
Panoramic  
Garden  
Golf  
Forest

### Pool

Communal  
Heated  
Indoor  
Private  
Children`s Pool

### Garden

Communal  
Landscaped

### Orientation

West  
South West

### Setting

Close To Golf  
Close To Port  
Urbanisation  
Close To Sea  
Close To Shops  
Close To Town  
Close To Schools  
Frontline Golf  
Close To Forest  
Close To Marina

### Furniture

Optional

### Security

Gated Complex  
24 Hour Security

### Climate Control

Air Conditioning  
Central Heating

### Condition

Excellent  
New Construction

### Kitchen

Fully Fitted  
Kitchen-Lounge

### Parking

Underground  
Garage



**Utilities**

Electricity

Telephone

Gas

Alarm System

Electric Blinds

Entry Phone

Safe

**Category**

Golf

Luxury

Resale

Contemporary

Private

Covered

Communal

More Than One