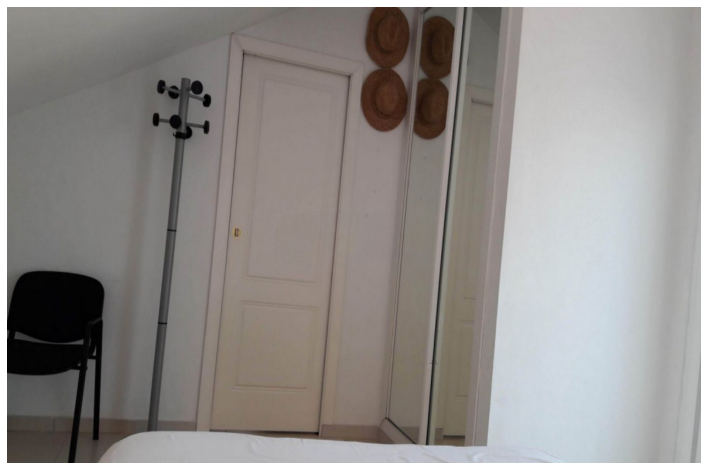




## Penthouse for sale in Benalmádena, Benalmádena

512.400 €

Reference: R5291992    Bedrooms: 4    Bathrooms: 2    Build Size: 167m<sup>2</sup>    Terrace: 20m<sup>2</sup>





## Costa del Sol, Benalmádena

Located in one of the most strategic and sought-after areas of Benalmádena Costa, Málaga, this exceptional four-bedroom duplex penthouse offers an unparalleled combination of luxury, a prime location, and attractive investment potential. Unbeatable Location - Málaga Airport is just 15 minutes away. - The property boasts exceptional connectivity, with easy access to Málaga city, Marbella, Puerto Banús, Gibraltar, and quick ferry access to Morocco. - All essential services, including supermarkets, hospitals, international schools, and public transport, are within easy walking distance. - Just 5 minutes from the best beaches on the Costa del Sol. A Home Designed for Comfort and Privacy - Spacious terraces surround the property, offering breathtaking panoramic views of the sea, the mountains, and the exclusive Torrequebrada golf course, considered one of the best in Europe. - The property is characterized by its brightness and welcoming spaces, with a smart layout and high-quality finishes. - Absolute privacy is guaranteed in an exclusive residential setting. Unique Investment Opportunity - The property offers a guaranteed return on investment, making it an ideal option for holiday rentals, given the high demand due to its proximity to beaches, golf courses, and leisure activities. - It is perfect for families seeking security, premium services, and an exceptional quality of life.



## Features:

### Özellikler

Kaldırmak  
Özel teras  
Depo  
Mermer döşeme  
Çift cam  
Takılmış gardıroplar

### Görüşler

Deniz  
Dağ

### Havuz

Ortak  
Otopark  
Yeraltı

### Oryantasyon

Güney

### Ayar

Golf'e yakın  
Kentleşme  
Denize yakın  
Okullara yakın

### Mutfak

Tam takılmış  
Kamu hizmetleri  
Elektrik  
İçilebilir su

### İklim kontrolü

Klima

### Durum

Harika

### Bahçe

Ortak