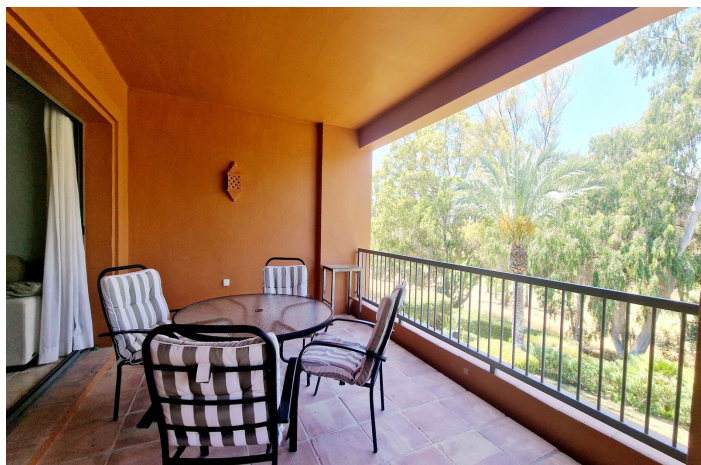




Middle Floor Apartment for rent in Estepona, Estepona

2,200 - 2,200 €

Reference: R5264893 Bedrooms: 2 Bathrooms: 2 Build Size: 100m² Terrace: 29m²





Costa del Sol, Estepona

ESTEPONA, BENATALAYA.. Nice 2 Bedroom, 2 Bathroom south facing apartment. Front line golf views ONLY TENANT WITH REFERENCES, must provide proof of income Minimum 6 months payment in advance, 2 months deposit A modern and spacious apartment for rent in a highly sought-after and privileged residential complex in the Atalaya/ Benahavis area. walking distance to Mercadona and a short drive away from San Pedro and Puerto Banus. The apartment has a privileged location within the urbanization, overlooking the golf course Built to a very high specification the apartment comes equipped with hot and cold air-conditioning throughout and marble flooring. The living/dining room is light and spacious and opens to the covered terrace. The kitchen is fully equipped with high quality appliances The master bedroom is en-suite; the bathroom has underfloor heating, a bath tub, separate shower, double sink. The second bedroom is set up with two single beds. Next door is a bathroom with underfloor heating, Both bedrooms have fitted wardrobes. The apartment has an allocated garage space and storage room The urbanisation boasts over 25,000 m2 of mature gardens, a fully equipped gymnasium, a spa and 4 outdoor community pools and an indoor pool, 24-hour security and all essentials within walking distance.



Features:

Features

Covered Terrace
Lift
Private Terrace
Storage Room
Ensuite Bathroom
Marble Flooring
Double Glazing
Fitted Wardrobes
Gym
Sauna
Utility Room

Views

Garden

Pool

Communal
Heated
Indoor

Garden

Communal

Utilities

Electricity
Drinkable Water

Orientation

East
West

Setting

Urbanisation
Close To Sea
Close To Town
Close To Schools

Furniture

Optional

Security

Gated Complex
24 Hour Security

Category

Holiday Homes
Luxury

Climate Control

Air Conditioning
Pre Installed A/C
Cold A/C
Hot A/C

Condition

Good

Kitchen

Fully Fitted

Parking

Underground