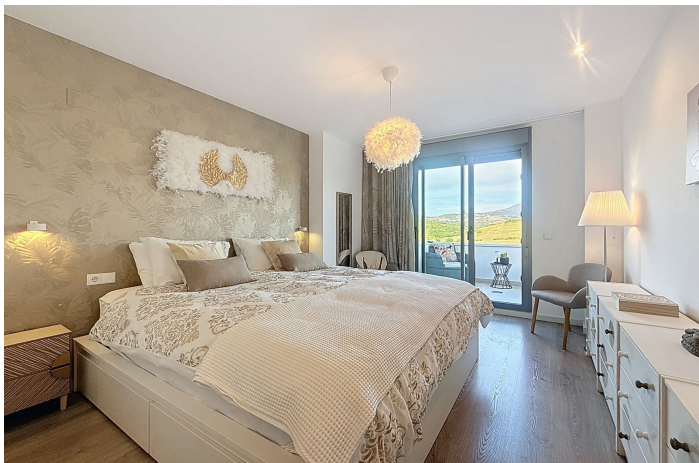
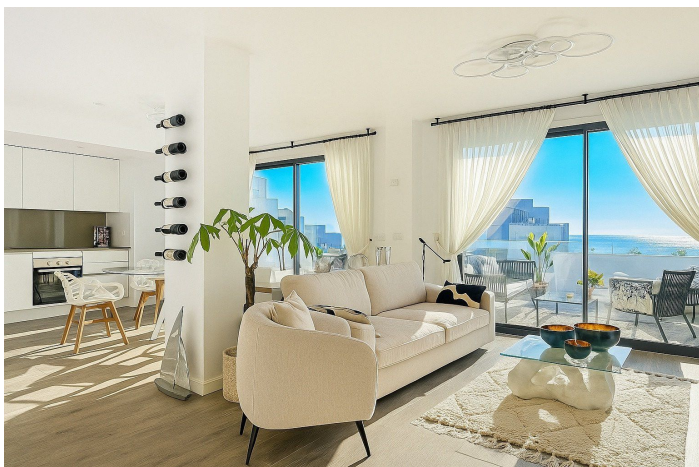




Penthouse Duplex for sale in Estepona, Estepona

515,000 €

Reference: R5274427 Bedrooms: 2 Bathrooms: 2 Build Size: 186m² Terrace: 87m²





Costa del Sol, Estepona

This duplex penthouse is located in the Serenity Views Urbanization, in West Estepona, and stands out for its impressive sea views and spaciousness. The property, situated in a gated community, offers the tranquility of living close to the sea and the convenience of being near golf courses, shops, restaurants, and schools. The home features a spacious main living room, designed with an open-concept layout, which integrates perfectly with the private terrace, allowing you to enjoy natural light and direct panoramic sea views. The kitchen, fully equipped and modern in style, is connected to the living room and includes high-quality appliances, as well as a practical laundry area. In the sleeping area, there are two bedrooms with built-in wardrobes and two full bathrooms, one of them en suite. The bedrooms are designed to offer comfort and privacy, and the master bedroom also has a private bathroom and a private terrace with views of the countryside and mountains. An elegant staircase leads to the solarium, where the sense of spaciousness and the breathtaking sea views are truly impressive. Among the extras offered by this duplex penthouse are air conditioning, double glazing, reinforced door, as well as a garage and storage room included. The complex features a swimming pool and mature communal gardens, and elevator. The property is in excellent condition and has close access to all amenities, including the port, city center, and the beach.



Features:

Features

Covered Terrace
Lift
Private Terrace
Storage Room
Double Glazing
Fitted Wardrobes
Solarium

Views

Sea

Pool

Communal

Security

Gated Complex

CO2 Emission Rating

D

Orientation

South

Setting

Close To Port
Close To Sea
Close To Shops
Close To Town
Close To Schools

Kitchen

Partially Fitted
Kitchen-Lounge

Parking

Communal

Climate Control

Air Conditioning

Condition

Excellent

Garden

Communal

Energy Rating

D