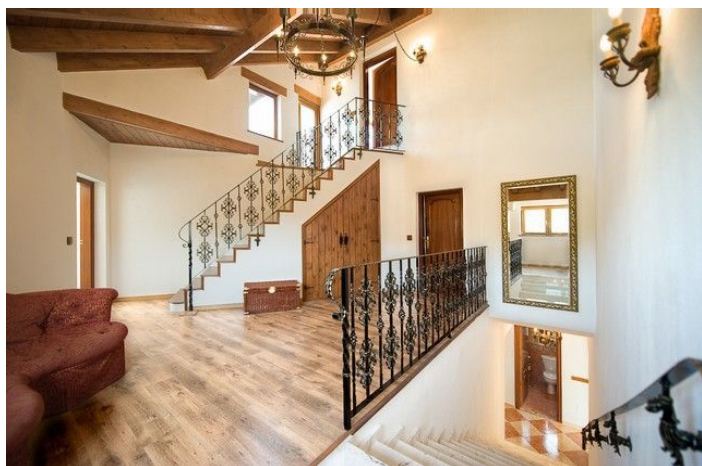




## Finca - Rural Estate en venta en Alhaurín el Grande, Alhaurín el Grande

2.500.000 €

Referencia: R5261503    Dormitorios: 7    Baños: 7    Terreno: 62.000m<sup>2</sup>    Construido: 766m<sup>2</sup>





## Valle del Guadalhorce, Alhaurín el Grande

Fort Inglés' has been meticulously renovated and enhanced to offer every modern luxury, whilst carefully retaining the original rustic style and décor. It is situated in its own valley on the borders of Alhaurin and Mijas. Nothing remotely compares to this unique property with its... Ideal location, panoramic views, extensive grounds, multitude of features 'Fort Inglés' is a meticulously restored 200 year old south facing finca with breathtaking views. Its unique, exclusive location overlooking the surrounding countryside is peaceful and private. It is conveniently situated on the scenic road between Fuengirola and Alhaurin El Grande, yet close to all amenities and 6 championship golf courses. 5 bedrooms all with Whirlpool baths & hydro massage showers Walk-in wardrobes and wraparound balconies 4 Reception Rooms Separate 2 bedroom, 2 bathroom apartment Recreation area with pool bar and separate changing rooms Heated pool and Sunken Jacuzzi Stable block / Recording Studio / 2 Bedroom Bungalow 100 m private drive 2 Pairs of electric opening gates Stonewalled garages 300 m of terraces and verandas Wraparound balconies Life size chess board on upper terrace 2 Solar heating systems Under-floor heating Automatically irrigated lawn 5 en-suite bedrooms with Tower room with panoramic views State-of-the-art kitchen 20 independently controlled, air con/heating units Open fireplace Minstrel gallery in master bedroom Marble staircase and Portuguese Rosa tiles Double glazing throughout with Gothic inserts Stabling for 4 horses and room for paddocks. The structure was massively expanded during the renovation and many of the original features have been preserved. The resulting effect is unique and highly distinctive. It incorporates the most modern facilities discretely blended to enhance the character. The spacious villa is ideal for entertaining yet maintains an intimate warm atmosphere. The house is surrounded by 62,000 square metres (15 acres) of rustic woodland in an exclusive, secluded valley with magnificent views of the mountains. A natural winding spring veins through the depth of the grounds. The area is perfect for horse riding and there is a stable block and paddock available. The estate is situated on the Mijas border opposite the internationally acclaimed Alhaurin Golf Course on the main road from Fuengirola to Alhaurin El Grande. It is minutes to the nearby motorway for Puerto Banus and Marbella and 30 minutes to Malaga Airport. There are 6 other championship golf courses nearby. Sierra Nevada, the southernmost ski resort in Europe, is just over two hours away and boasts having the longest ski season with the highest amount of sunshine. It is possible to swim in the heated pool in the morning and ski in the afternoon. The historic towns of Granada and Seville are within easy distance and Gibraltar is 90 minutes away. We are most fortunate that our particular area of Andalusia is recognized by UNICEF as being part of the world network of Biosphere reserves, structured and coordinated under the UNESCO Man and Biosphere Program, which aims at conserving unique natural environment. This is especially helpful for people with rheumatism, arthritis, bronchial or asthma sufferers. We are currently offering weekly holiday rentals during the low season at £1,750, medium season £2,750, and high season for £3,750 per week.



## Características:

### Características

Terraza Cubierta  
Terraza Privada  
Baño En-Suite  
Suelos de Mármol  
Doble acristalamiento  
Apptmnt. Huéspedes  
Lavadero  
Establos

### Vistas

Vistas a Montaña  
Vistas Panorámicas  
Vistas al Campo

### Piscina

Piscina Privada

### Jardín

Jardín Privado

### Servicios Públicos

Electricidad  
Agua Potable

### Orientación

Orientación Suroeste

### Posición

Campo

### Muebles

Opcionales

### Seguridad

Recinto Cerrado

### Categoría

Lujo  
Reventa

### Climatización

Aire Acondicionado  
Chimenea  
Calefacción Central.

### Estado

Excelente estado de conservación

### Cocina

Cocina Equipada

### Aparcamiento

Parking Privado