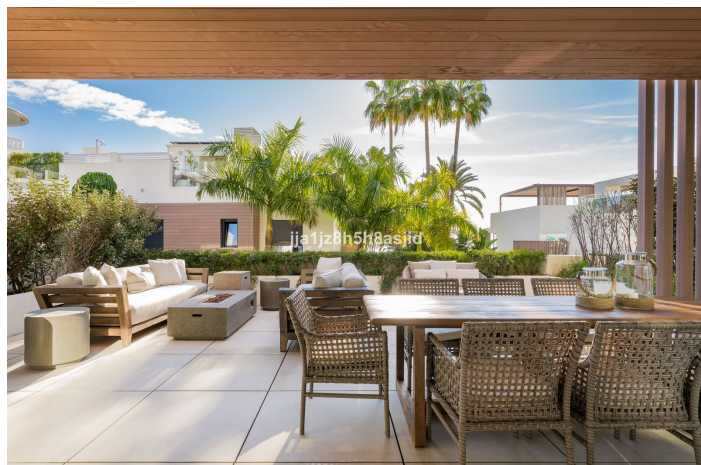
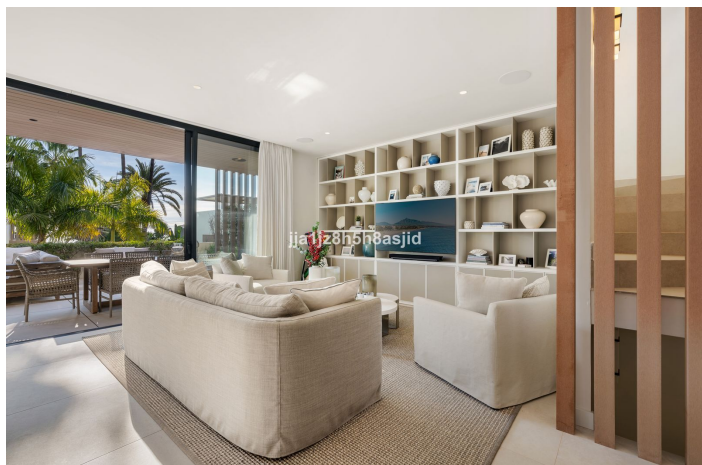




Semi-Detached House for sale in Sierra Blanca, Marbella

3,390,000 €

Reference: R5264362 Bedrooms: 4 Bathrooms: 5 Plot Size: 37m² Build Size: 421m²





Costa del Sol, Sierra Blanca

The ultimate in contemporary Andalusian living. Step into this exceptional 4-bedroom, 4,5-bath residence within the Le Blanc estate, perched on the hillside of Sierra Blanca above Marbella's Golden Mile. Floating on the horizon, the Mediterranean, Gibraltar and distant North Africa form your ever-changing vista. Feel the light flood through full-height glass doors that connect the open-plan living and dining space directly to a broad terrace and garden—ideal for effortless indoor-outdoor living. The designer kitchen, finished in top-tier appliances and materials, is a joy for culinary enthusiasts and entertaining alike. A cinema room, two saunas (steam and infrared), and a lift are some of the standout features that add exceptional comfort and luxury to the home. Retreat to the master suite with its dressing room, luxury en-suite and terrace where you wake to the sea. Two further bedrooms share a stylish bathroom; a fourth guest suite offers true flexibility for family or visitors. The basement garage accommodates multiple(2) vehicles and offers ample storage. The crowning jewel: a rooftop solarium designed for leisure and luxury. Picture yourself here—sun loungers, al-fresco dining, a built-in BBQ or outdoor kitchen, Jacuzzi beneath the stars, all while soaking in uninterrupted sea-to-mountain views. With refined finishes throughout, under-floor heating, smart home comforts, and the peace of a secure gated community complete with a landscaped pool, this is more than a house—it's a lifestyle. All just minutes from the beach, Marbella's fine dining and international schools.



Features:

Features

Lift
Private Terrace
Storage Room
Ensuite Bathroom
24 Hour Reception
Fitted Wardrobes
Solarium
Sauna
Utility Room
Jacuzzi
Barbeque

Views

Sea
Mountain
Panoramic
Garden

Pool

Communal
Garden
Communal
Landscaped

Utilities

Electricity

Orientation

South
South East
South West

Setting

Urbanisation
Close To Town
Close To Schools
Close To Forest

Furniture

Optional

Security

Gated Complex
24 Hour Security
Electric Blinds
Entry Phone

Category

Investment
Luxury

Climate Control

Pre Installed A/C
Central Heating
U/F Heating
U/F/H Bathrooms

Condition

Excellent

Kitchen

Fully Fitted

Parking

Underground
Garage
Private
Covered
More Than One