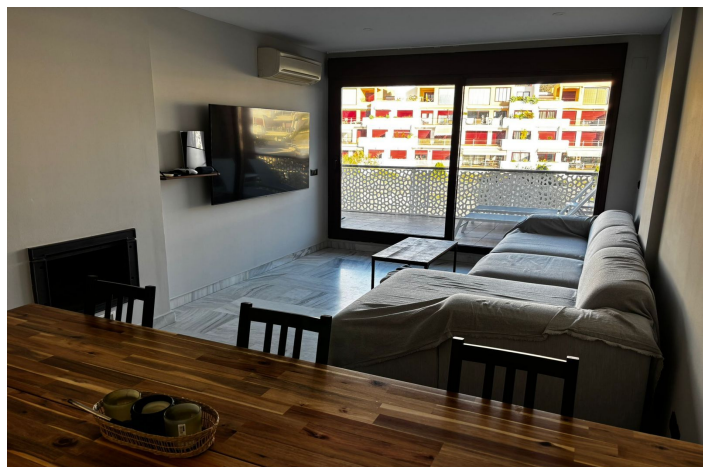




Middle Floor Apartment for sale in Benahavís, Benahavís

285,000 €

Reference: R5258839 Bedrooms: 1 Bathrooms: 1 Build Size: 92m² Terrace: 20m²





Costa del Sol, Benahavís

Charming 1-Bedroom Apartment in Parque Botánico Urbanisation – Estepona, with Resort Amenities Discover this impeccable 1-bedroom apartment in the prestigious Parque Botánico urbanisation, a luxurious gated community in Estepona on the sun-drenched Costa del Sol – renowned for its serene location between the mountains and sea, offering resort-style living with lush botanical gardens, multiple swimming pools (including heated indoor and outdoor options), a state-of-the-art gym, spa with sauna and jacuzzi, tennis courts, and 24-hour security. This prime spot provides easy access to pristine beaches (10-15 minutes), world-class golf courses like Los Flamingos, international schools, supermarkets, and the A-7 for quick trips to Puerto Banús or Málaga Airport – ideal for year-round living or investment in Estepona's thriving 2025 market, where similar properties average €300,000-€450,000 with strong rental yields of 5-7% amid growing demand for eco-friendly resorts. Spanning 92 m² of built space on a mezzanine exterior floor with convenient lift access and desirable south-east orientation for abundant natural light, this well-maintained residence boasts a functional layout: one spacious bedroom with fitted wardrobes, a modern bathroom, a living-dining room with fully equipped kitchen, and a generous 20 m² terrace perfect for relaxation or al fresco dining. Premium features include air conditioning throughout, individual electric heating, and a garage space equipped with electric car charging installation, plus a 5 m² storage room – all enhancing everyday convenience. The urbanisation's exceptional amenities include expansive gardens, pools, and a welcoming community atmosphere, ensuring low-maintenance luxury. This turnkey property is a rare find for comfortable living or rentals – contact us today to arrange a viewing!



Features:

Features

Covered Terrace
Lift
Near Transport
Private Terrace
Satellite TV
Storage Room
Ensuite Bathroom
Marble Flooring
Double Glazing
24 Hour Reception
Fitted Wardrobes
Solarium
WiFi
Gym
Sauna
Games Room
Paddle Tennis
Tennis Court
Jacuzzi
Barbeque
Restaurant On Site
Fiber Optic
Access for people with reduced mobility

Views

Garden
Courtyard
Lake

Pool

Communal
Heated
Indoor
Children`s Pool

Garden

Communal

Orientation

East
South

Setting

Close To Golf
Urbanisation
Close To Town
Close To Schools

Furniture

Optional

Security

Gated Complex
24 Hour Security
Alarm System

Climate Control

Air Conditioning
Fireplace

Condition

Excellent

Kitchen

Fully Fitted

Parking

Underground
Garage
Private
Communal