

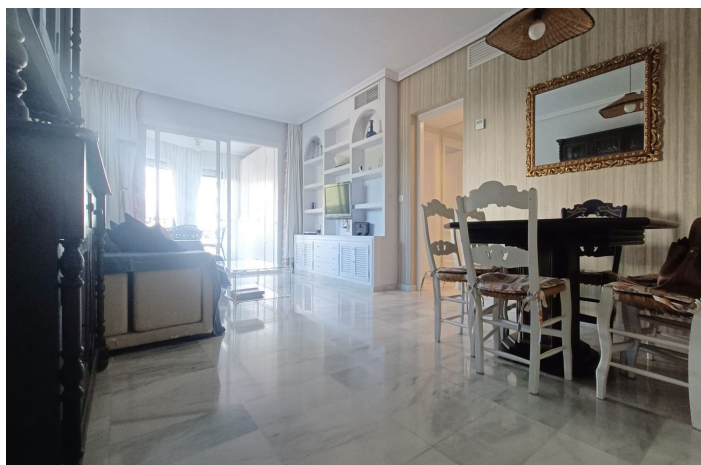


Appartement au milieu à vendre à Puerto Banús, Marbella

560 000 €

Référence: R5256337 Chambres: 2 Bain: 2 Construite: 115m² Terrasse: 8m²







Costa del Sol, Puerto Banús

EXCELLENT PROPERTY IN THE HEART OF PUERTO BANÚS Beautiful flat. The complex is just a few metres from the promenade and the beach, with large garden areas, 4 swimming pools, 1 paddle tennis court and 24-hour security. Surrounded by all the amenities offered by a unique location such as Puerto Banús, it is ideal for year-round living or summer holidays due to its good location and services. The apartment is spacious, with 2 bedrooms, each with its own fitted wardrobe with loft space and new doors. 2 full bathrooms, both with showers, the main one en suite . Spacious living/dining room with access to a pleasant covered terrace enclosed with sliding glass doors, allowing it to be used in both winter and summer. The property has undergone several improvements, which are detailed below: The tap water is purified, so there is no need to use bottled water. Both bathrooms have wall-mounted heaters. Fitted wardrobes. The walls facing the neighbouring property have 4 cm of soundproofing. The window in the second bedroom has double glazing. Extra window on the side of the living room, providing much more light than other similar apartments in the complex. Painted in summer 2025. Blinds on the terrace, one of which is electric. Mosquito nets. Satellite TV installation. Sliding kitchen drawers and drawers in the lower plinth. Only 9 neighbours to use the lift. Appliances recently replaced. Garage space included in the price. It should be noted that the current owners have been the only owners of the property, hence its good condition. A PERFECT PROPERTY for those who want to enjoy a place with all amenities close at hand.)



Spécification:

Caractéristiques

Terrasse couverte
Ascenseur
Près du transport
Terrasse privée
Sol en marbre
Double vitrage
Réception 24 heures
Armoires ajustées
Paddle tennis

Vues

Jardin

Piscine

Communautaire

Jardin

Communautaire

Catégorie

Revente

Orientation

Est

Paramètre

Zone commerciale
En bord de mer
Urbanisation
Proche des magasins
Port
Près de Marina

Meubles

Non meublé

Sécurité

Complexe fermé
Sécurité 24 heures

Climatisation

Climatisation
Cold A / C
A / C chaud

Condition

Bien

Cuisine

Entièrement équipé

Parking

Garage