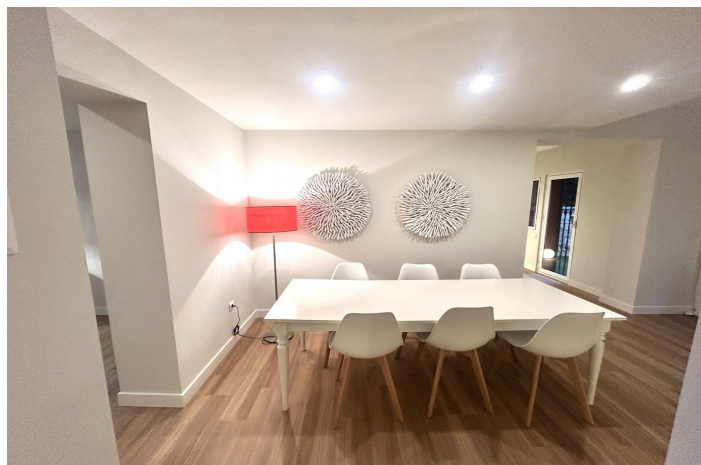




## Semi-Detached House for sale in Atalaya, Estepona

**690.000 €**

Reference: R5251573 Bedrooms: 4 Bathrooms: 3 Plot Size: 250m<sup>2</sup> Build Size: 285m<sup>2</sup> Terrace: 100m<sup>2</sup>





---

## Costa del Sol, Atalaya

Large house ready to go in to live; From the beautiful front garden and through a stone staircase you access the entrance of the house open to a large living room with fireplace that has plenty of light all day as it is south orientation; on this floor there is also a separate kitchen, with small dining room, that gives the access garden, a guest toilet and a small extra room perfect for office, or for room to play, from which you pass to the private garage covered with The house is the Lomas de Monte Biarritz one of the most beautiful and well-kept urbanizations in the area; On the first floor there are 3 bedrooms, the master with en-suite bathroom, closet area and access to two terraces one of them huge solarium type; , the other two rooms also have fitted wardrobes and share another bathroom; the house has a more attic floor where a small room is located with a large terrace that enjoys wide views. The house has recently been completely renovated by architects; so this list to enter to live and by its orientation, has a lot of light all day; the community is very well maintained and managed. It has large and beautiful gardens and 2 swimming pools, one of adults and another of children; It is a perfect house for families with children, since there is a lot of atmosphere; and it is perfect for living all year round; since it is next to all services: The Guadalmina Shopping Centre also the Atalaya and San José schools in Guadalmina are next to it; Call us and we teach you!!



## Features:

### Özellikler

Kapalı teras  
Ulaşım yakınında  
Özel teras  
Mermer döşeme  
Çift cam  
Takılmış gardıroplar  
Solaryum  
Oyun odası  
Kamu hizmeti odası  
Ahşap döşeme

### Görüşler

Panoramik  
Ülke  
Bahçe  
Havuz

### Havuz

Ortak

### Bahçe

Özel

### Enerji derecesi

C

### Oryantasyon

Güney

### Ayar

Golf'e yakın  
Limana yakın  
Denize yakın  
Dükkanlara Yakın  
Şehre yakın  
Okullara yakın

### Mobilya

Mobilyalı

### Güvenlik

Kapılı kompleks  
Elektrikli panjur

### CO2 Emisyon Derecesi

C

### İklim kontrolü

Şömine

### Durum

İyi  
Harika  
Son zamanlarda yenilenmiş  
Yeni İnşaat

### Mutfak

Kısmen takılı

### Otopark

Özel