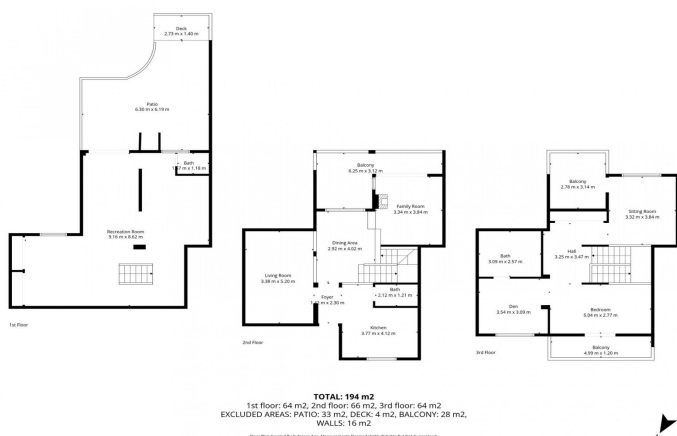




## Townhouse for sale in Monda, Monda

**349,000 €**

Reference: R5248144 Bedrooms: 3 Bathrooms: 2 Build Size: 237m<sup>2</sup> Terrace: 32m<sup>2</sup>





---

## Sierra de las Nieves, Monda

Upon entering, you'll find a split-level living and dining area with a cozy fireplace, a fully fitted kitchen, and a guest toilet. From the living room, you have direct access to a lovely terrace with beautiful views—perfect for enjoying morning coffee or evening sunsets. Originally, the area by the entrance served as a private garage, but it now functions as a showroom/lounge. This versatile space could easily be transformed into an additional bedroom, a home office, or a snug TV room. The current owner has thoughtfully redesigned the entrance level to create an open, light-filled layout that allows natural brightness to flow throughout the home. Upstairs, the property features an exceptionally large master suite that could be reconfigured into up to three bedrooms simply by adding room dividers. A second bathroom could also be installed if desired. This level offers two inviting terraces—one for sun, one for shade—both with pleasant views of the surrounding landscape. A standout feature of this townhouse is the expansive semi-basement, currently used as a creative studio. The possibilities here are endless: a hobby or craft room, dance studio, private guest quarters, cinema room, or a spacious home office. From this level, you enjoy access to a generous garden patio, ideal for entertaining, outdoor dining, and BBQ gatherings. The house forms part of a well-kept community with a friendly international atmosphere, offering a welcoming environment to residents of all backgrounds. This townhouse is an excellent choice for those seeking a peaceful retreat with authentic Andalusian charm, yet within walking distance to Monda's amenities and just a short drive from Marbella and the coast. Perfect as a permanent residence, holiday home, or investment opportunity.



## Features:

### Features

Near Transport  
Private Terrace  
Fitted Wardrobes  
Basement

### Views

Mountain  
Panoramic  
Country  
Garden

### Garden

Communal

### Orientation

South

### Setting

Close To Shops  
Close To Town  
Close To Schools

### Parking

Private

### Climate Control

Air Conditioning  
Fireplace

### Furniture

Optional

### Utilities

Electricity