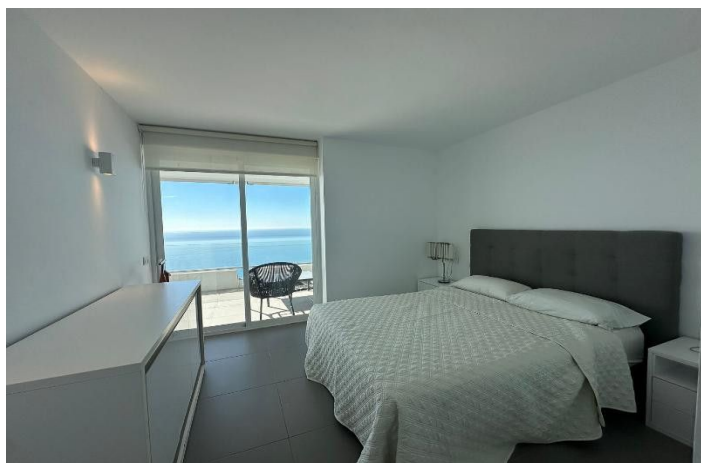
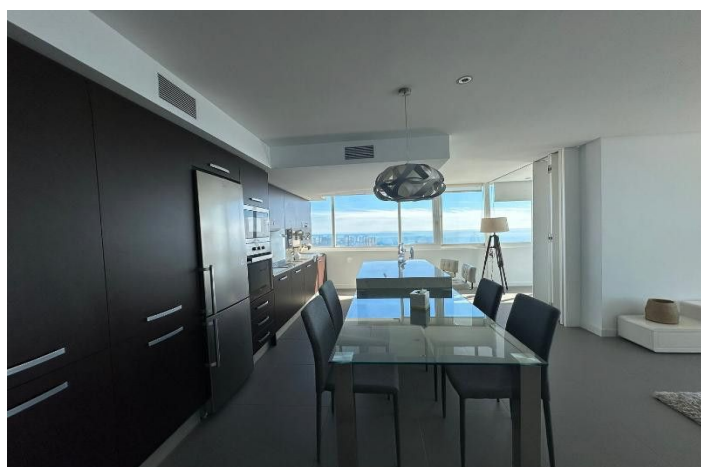
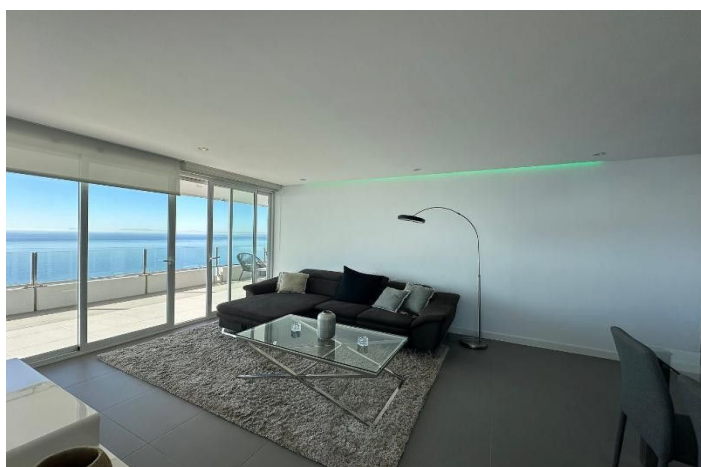




Appartement au milieu à louer à Río Real, Marbella

3 000 - 3 000 €

Référence: R5215765 Chambres: 1 Bain: 2 Construite: 117m²





Costa del Sol, Río Real

This bright apartment offers a unique life experience, combining modern comfort with a privileged environment. From the first moment, it stands out for its breathtaking panoramic views covering the sea, the mountain and the city, creating an atmosphere of serenity and exclusivity. The property allows animals, making it an ideal choice for those looking to share their home with their pets on the Costa del Sol.

The apartment has a large bedroom and two bathrooms, distributed in 117m² built that make the most of natural light and space. The house is presented in excellent condition, fully furnished and equipped with an open concept kitchen and high-end appliances. The living-dining room, with direct access to a private covered terrace, invites you to enjoy unforgettable moments overlooking the garden, the pool and the Mediterranean horizon.

Among its features are air conditioning, electric radiators, double glazing, fitted wardrobes and alarm system, ensuring comfort and safety throughout the year. The building has an elevator and belongs to a gated community with gardens and communal pool, offering a safe and quiet environment. In addition, the property includes parking space and private storage room.

The location is unbeatable, with easy access to all services, shopping center, restaurants, schools and public transport, as well as the proximity to the beach and the urban center. This apartment represents an exceptional opportunity for those who want to enjoy life in Marbella and the whole Costa del Sol, combining luxury, comfort and an incomparable natural environment.



Spécification:

Caractéristiques

Terrasse couverte
Ascenseur
Près du transport
Terrasse privée
Double vitrage
Armoires ajustées
Buanderie

Vues

Mer
Montagne
Panoramique
Jardin
Piscine

Piscine

Communautaire

Jardin

Communautaire

Cote d'énergie

D

Orientation

Sud

Paramètre

En bord de mer
Près de la mer
Proche des magasins
Près de la ville
Près des écoles

Meubles

Entièrement meublé

Sécurité

Complexe fermé

Système d'alarme

Cote d'émission de CO2

C

Climatisation

Climatisation

Condition

Excellent

Cuisine

Cloison

Parking

Private