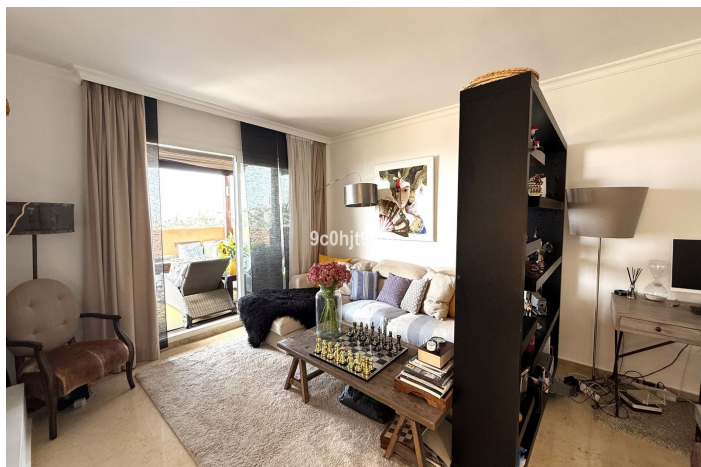




Penthouse Duplex for sale in Elviria, Marbella

499.000 €

Reference: R5126038 Bedrooms: 2 Bathrooms: 2 Build Size: 108m² Terrace: 60m²





Costa del Sol, Elviria

Discover this beautifully refurbished penthouse located in the prestigious Los Lagos de Santa María Golf development in Elviria. Offering a perfect blend of contemporary style and comfort, this spacious apartment is ideal for those seeking quality living in a tranquil yet well-connected location. This stylish penthouse features 2 double bedrooms and 2 modern bathrooms, both recently renovated with high-end fixtures and elegant finishes. The sleek new kitchen has been fully updated with contemporary cabinetry, quality appliances, and a clean layout ideal for both cooking and entertaining. The standout feature of this property is the refurbished terrace, offering panoramic views over the golf course and surrounding greenery – perfect for outdoor dining, relaxing in the sun, or enjoying the Jacuzzi and the sunset evenings. Additional features include marble flooring, fitted wardrobes, air conditioning (hot and cold), and underground parking with lift access. Set within a secure and well-maintained complex with several communal swimming pools and beautifully landscaped gardens, the property is just minutes from Elviria's popular commercial centre, sandy beaches, and the renowned Santa María Golf Club. Whether you're looking for a permanent residence, holiday getaway, or a smart investment, this turnkey penthouse ticks all the boxes.



Features:

Özellikler

Kapalı teras
Kaldırmak
Özel teras
Depo
Mermer döşeme
Çift cam
Takılmış gardıroplar
Wifi

Jakuzi
Fiber optik

Görüşler

Deniz
Panoramik

Havuz

Ortak

Bahçe

Ortak

Kamu hizmetleri

Elektrik
İçilebilir su
Telefon

Oryantasyon

Batı
Güney Batı

Ayar

Golf'e yakın
Kentleşme
Denize yakın

Mobilya

Tamamen mobilyalı

Güvenlik

Kapılı kompleks

Kategori

Lüks
Yeniden satış

İklim kontrolü

Klima
Şömine

Durum

Harika
Son zamanlarda yenilenmiş

Mutfak

Tam takılmış

Otopark

Yeraltı