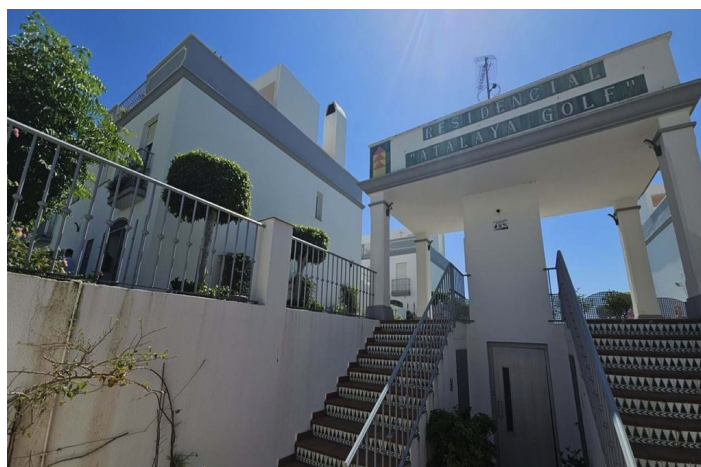




Townhouse for sale in Atalaya, Estepona

655,000 €

Reference: R5159662 Bedrooms: 3 Bathrooms: 3 Build Size: 240m² Terrace: 40m²





Costa del Sol, Atalaya

Prime Townhouse in Urb. Atalaya Golf with Rooftop Terrace & Sea Views – Exclusive Costa del Sol Living Surrounded by Golf Courses! Seize this outstanding opportunity to own a stunning townhouse in one of the Costa del Sol's premier locations, Urb. Atalaya Golf. Built in 2006, this south-facing, 240 m² semi-detached chalet spans three floors and offers 3 bedrooms, 3 bathrooms, private parking for two cars, and a host of modern amenities – all in a family-friendly community with few neighbors, enveloped by prestigious golf courses and just 4 minutes from San Pedro de Alcántara. Key Features: Ground Floor: Spacious living room, fully equipped kitchen, laundry room, guest toilet, and a large private patio for outdoor enjoyment. First Floor: Three comfortable bedrooms with built-in wardrobes, two bathrooms (one en suite) for ultimate privacy and convenience. Second Floor: Fully usable rooftop terrace (azotea) equipped with all services, offering breathtaking sea views – perfect for entertaining, sunbathing, or stargazing. Private Garage: Generous 50 m² space for secure parking and storage. Community Amenities: Shared swimming pool in a tranquil, gated urbanization with lush surroundings and a welcoming family atmosphere. Comfort Essentials: Air conditioning throughout, built-in wardrobes, terrace and balcony for additional outdoor space, and a dedicated storage room (trastero). This impeccably maintained property is ideal for year-round living or a luxurious holiday home in a privileged golf-front setting. Contact us today to arrange a viewing and secure your slice of paradise!



Features:

Features

Covered Terrace
Near Transport
Private Terrace
Storage Room
Ensuite Bathroom
Marble Flooring
Double Glazing
Fitted Wardrobes
WiFi
Utility Room
Barbeque
Fiber Optic

Views

Sea
Mountain
Panoramic
Country
Garden
Courtyard

Pool

Communal

Garden

Communal

Orientation

East
West

Setting

Close To Golf
Urbanisation
Close To Shops
Close To Town
Close To Schools
Frontline Golf

Furniture

Optional

Security

Gated Complex
Alarm System
Entry Phone

Climate Control

Air Conditioning

Condition

Excellent

Kitchen

Fully Fitted

Parking

Garage
Private
Covered
More Than One