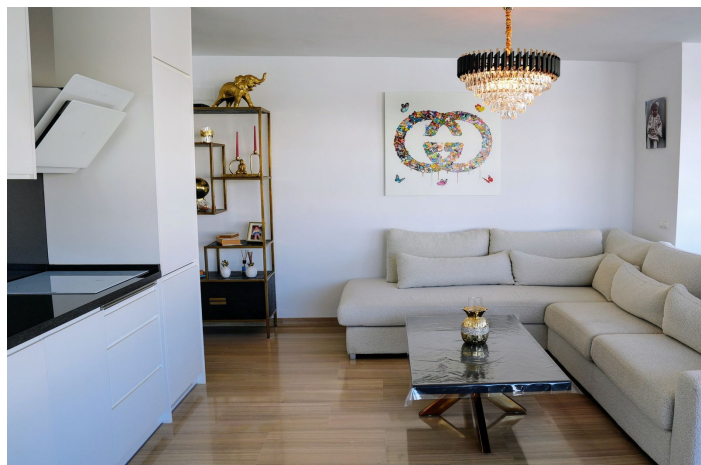




Penthouse for sale in Benalmadena Costa, Benalmádena

745,000 €

Reference: R4909324 Bedrooms: 3 Bathrooms: 1 Build Size: 121m²





Costa del Sol, Benalmadena Costa

Do you dream of living a fantasy on an island in the sea? Keep reading, because now your dream could come true. We present this luxurious apartment completely renovated with high qualities and finishes. Its location in the Marine Islands allows unbeatable views of the magical port and its many boats and yachts. This exclusive property offers a large area that integrates the very bright living room with the modern fully equipped kitchen, also thanks to its Lumón enclosure on the terrace that surrounds it you can enjoy clarity and impressive views. It has three bedrooms: the master bedroom is very spacious, equipped with a built-in wardrobe, and has direct access to the terrace with large windows so you can enjoy plenty of light. The second bedroom is equipped with a double bed and also has access to the terrace. The third bedroom has a triple bunk bed. The bathroom, with an elegant and functional design, is complete and is equipped with a comfortable shower tray and a double sink. On top of all this, you can find a laundry room and also included in the price comes a convenient storage room. The exclusive communal area is equipped with a large solarium, and a dream swimming pool, ideal for soaking in its refreshing water after a hot day of sun and beach. If you are looking for a truly exclusive and unique location from where you can access the beach on foot, and the best restaurants in the Port and a large number of sports and leisure activities... This property is for you !This is an incredible opportunity to enjoy a lifestyle of the highest quality with all luxury at your fingertips. Do not hesitate to contact us to arrange a visit.



Features:

Features

Covered Terrace
Lift
Near Transport
Private Terrace
Satellite TV
Storage Room
Marble Flooring
Fitted Wardrobes
Solarium
WiFi
Utility Room
Restaurant On Site
Fiber Optic

Views

Sea
Panoramic
Beach
Port

Pool

Communal
Heated

Security

Gated Complex
Entry Phone

Orientation

North
East
North East

Setting

Commercial Area
Beachside
Close To Port
Urbanisation
Close To Sea
Close To Shops
Close To Town
Close To Schools
Beachfront
Port
Marina
Close To Marina
Front Line Beach Complex

Furniture

Fully Furnished

Utilities

Electricity
Drinkable Water

Climate Control

Air Conditioning
Cold A/C
Hot A/C
Central Heating

Condition

Excellent
Recently Renovated

Kitchen

Fully Fitted

Category

Holiday Homes
Investment
Beachfront
Luxury
Resale