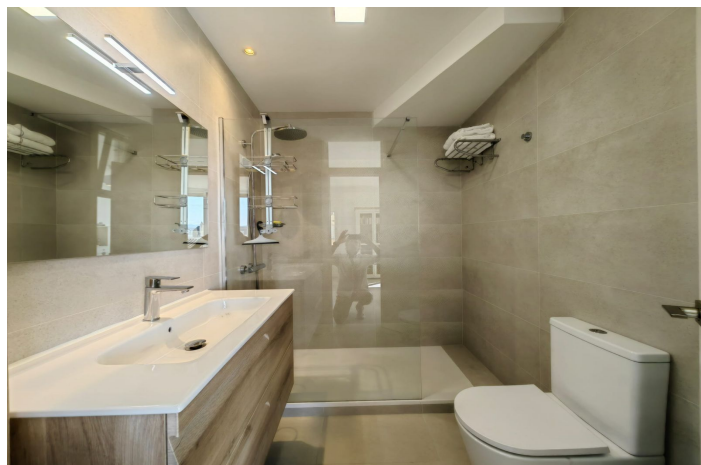




Middle Floor Apartment for sale in Estepona, Estepona

547.500 €

Reference: R5144950 Bedrooms: 3 Bathrooms: 2 Build Size: 173m² Terrace: 14m²





Costa del Sol, Estepona

Exclusive Frontline Beach Apartment in Marina Bay, Estepona Situated in the sought-after Marina Bay urbanisation, perfectly positioned between the Port of Estepona and the popular Playa del Cristo, this stunning fourth-floor apartment offers the very best of beachfront living. With direct access to the beach through two private entryways, it combines elegance, convenience, and lifestyle in one of Estepona's most desirable locations. The apartment welcomes you with an elegant central lobby. To the right, a spacious open-plan kitchen, dining, and lounge area unfolds, seamlessly connecting to a covered terrace with a fully furnished lounge — ideal for enjoying sunny mornings and the cooler shade of the afternoons thanks to its southeast orientation. On the opposite side, the large master bedroom features an ensuite bathroom and breathtaking sea views. Two further guest bedrooms, one with the same stunning outlook, share a newly refurbished bathroom. Recently renovated throughout with high-quality contemporary finishes, the apartment is key-ready, with brand-new bathrooms, kitchen, windows, and doors. It is sold fully furnished and includes a private underground parking space. The urbanisation itself has undergone extensive upgrades, including new tiling, landscaped garden areas, refurbished swimming pools, and modernised elevators. Residents also benefit from on-site amenities such as a coffee shop and the upcoming wellness clinic. Just a 5-minute walk from the vibrant Marina and all local amenities, this apartment is a rare opportunity to own a stylish and completely renovated home in a prime frontline beach location.



Features:

Özellikler

Kapalı teras
Kaldırmak
Ulaşım yakınında
Özel teras
Ensuite Banyo
Çift cam
Takılmış gardıroplar
Kamu hizmeti odası
Sitede restoran
Kilise yakınında
Fiber optik
Hareketliliği azaltılmış kişiler için erişim

Görüşler

Deniz
Dağ
Havuz
Sahil
Kentsel

Havuz

Ortak
Bahçe
Ortak
Kolay Bakım

Kamu hizmetleri

Elektrik
İçilebilir su

CO2 Emisyon Derecesi

D

Oryantasyon

Güney Doğu
Güney Batı

Ayar

Sahil kenarında
Limana yakın
Kentleşme
Denize yakın
Dükkanlara Yakın
Şehre yakın
Okullara yakın
Sahil
Liman
Marina
Marina'ya yakın
Ön cephe plaj kompleksi

Mobilya

Tamamen mobilyalı

Güvenlik

Kapılı kompleks
Alarm sistemi
Elektrikli panjur
Giriş telefonu

Kategori

Tatil Evleri
Yatırım
Sahil
Lüks
Yeniden satış
Modern

İklim kontrolü

Klima
Soğuk klima
Sıcak klima

Durum

Harika
Son zamanlarda yenilenmiş

Mutfak

Tam takılmış
Otopark
Yeraltı
Özel

Enerji derecesi

E