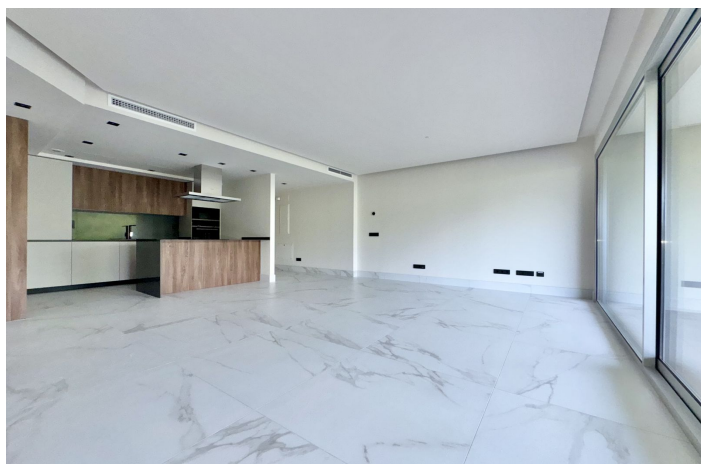




## Middle Floor Apartment for rent in San Pedro de Alcántara, Marbella

3,700 - 3,700 €

Reference: R5077309   Bedrooms: 3   Bathrooms: 2   Build Size: 155m<sup>2</sup>   Terrace: 36m<sup>2</sup>





---

## Costa del Sol, San Pedro de Alcántara

New modern apartments in the prestigious MARE complex is a modern residential complex from the renowned developer Taylor Wimpey, located in San Pedro de Alcantara, just a few minutes walk from the beach and promenade, as well as in close proximity to the historic city centre and the famous Puerto Banus. The neighbourhood is characterised by wide modern avenues, bicycle paths, green areas and well-developed infrastructure: restaurants, shops, public transport and everything you need for a comfortable life are close by. Advantages and infrastructure: - To the beach - 4 minutes walk, to the centre of San Pedro - 3 minutes. - Direct transport accessibility: 5 minutes by car to Puerto Banus, 40 minutes to Malaga airport. - The area is actively developing and is considered one of the most promising in Marbella. - The complex has implemented modern standards of energy efficiency and safety (compliance with the latest building regulations in Spain) Briefly about the advantages: - Modern design and premium quality construction - Spacious terraces and bright interiors - Gated and secured area with swimming pool and green areas - Unique location close to the sea and all the infrastructure MARE - ideal for living, holiday or investment on the Costa del Sol.



## Features:

### Features

Covered Terrace  
Lift  
Near Transport  
Private Terrace  
Domotics

### Views

Mountain  
Urban

### Pool

Communal  
Children`s Pool

### Garden

Communal

### Category

Contemporary

### Orientation

South East

### Setting

Commercial Area  
Beachside  
Urbanisation  
Close To Sea  
Close To Shops  
Close To Schools  
Town

### Furniture

Not Furnished

### Security

Gated Complex  
24 Hour Security

### Climate Control

Air Conditioning

### Condition

Excellent  
New Construction

### Kitchen

Fully Fitted

### Parking

Underground