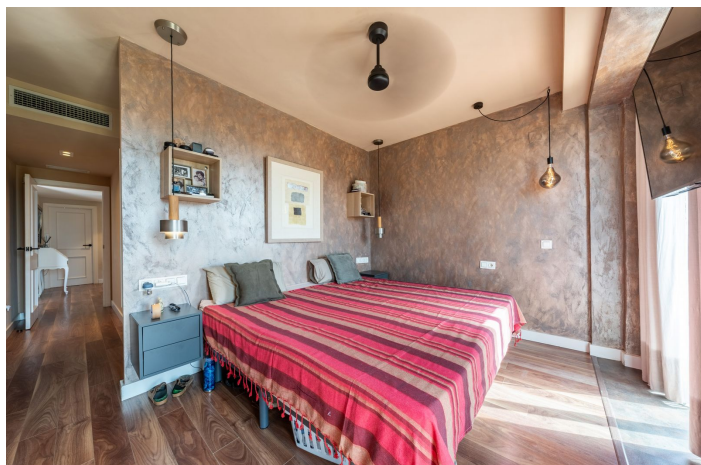




## Penthouse for sale in Estepona, Estepona

880.000 €

Reference: R5132797   Bedrooms: 3   Bathrooms: 4   Build Size: 303m<sup>2</sup>   Terrace: 118m<sup>2</sup>





---

## Costa del Sol, Estepona

Step into this stunning 303 m<sup>2</sup> duplex penthouse, designed with exceptional taste and attention to detail, creating a warm yet sophisticated atmosphere. Located in a prestigious gated community, residents enjoy 24-hour security, beautifully landscaped communal gardens spanning 20,000 m<sup>2</sup>, three swimming pools, and exclusive access to tennis and paddle courts. Prime Location Surrounded by the renowned Atalaya and El Paraíso golf courses, the property offers peace, privacy, and a privileged lifestyle. Just minutes from San Pedro de Alcántara and Puerto Banús, with quick access to the N-340 and only a 50-minute drive to Málaga Airport. Nearby you'll find international schools, supermarkets, and all essential amenities. Layout & Features First Floor: •Bright and spacious living-dining area with fireplace and direct access to a large terrace with dining space, offering panoramic views of the gardens and mountains. •Fully renovated open-plan kitchen with a sleek, modern design. •Guest WC. •Three bedrooms in total: a master suite with dressing area and en-suite bathroom, plus two additional bedrooms with their own balconies or terraces. Upper Level: •Converted into an impressive leisure and entertainment space, perfect for year-round use. Additional Highlights: •Retractable terrace enclosure for summer and winter comfort. •Large outdoor dining area with BBQ, seating up to 10 guests. •Outdoor entertainment area with ping-pong table. •Stunning views over lush gardens and surrounding mountains. •Option to rent or purchase a covered parking space within the community. - LPO and Tourist Rental Licence in place.



## Features:

### Özellikler

Kapalı teras  
Özel teras  
Takılmış gardıroplar  
Wifi  
Kürek tenisi  
Ahşap döşeme  
Barbekü

### Görüşler

Dağ  
Ülke  
Bahçe  
Havuz  
Havuz  
Ortak  
Güvenlik  
Kapılı kompleks  
CO2 Emisyon Derecesi  
B

### Oryantasyon

Güney Batı

### Ayar

Dükkanlara Yakın  
Şehre yakın  
Okullara yakın

### Mobilya

İsteğe bağlı  
Otopark  
Ortak

### İklim kontrolü

Klima  
Şömine  
Kalorifer

### Durum

İyi

### Bahçe

Ortak  
Enerji derecesi  
B