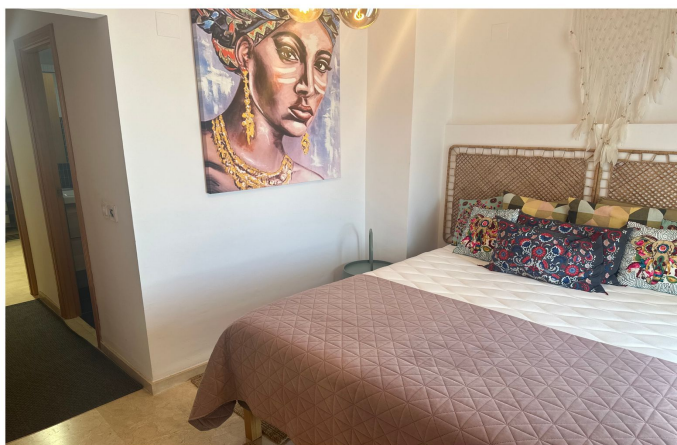
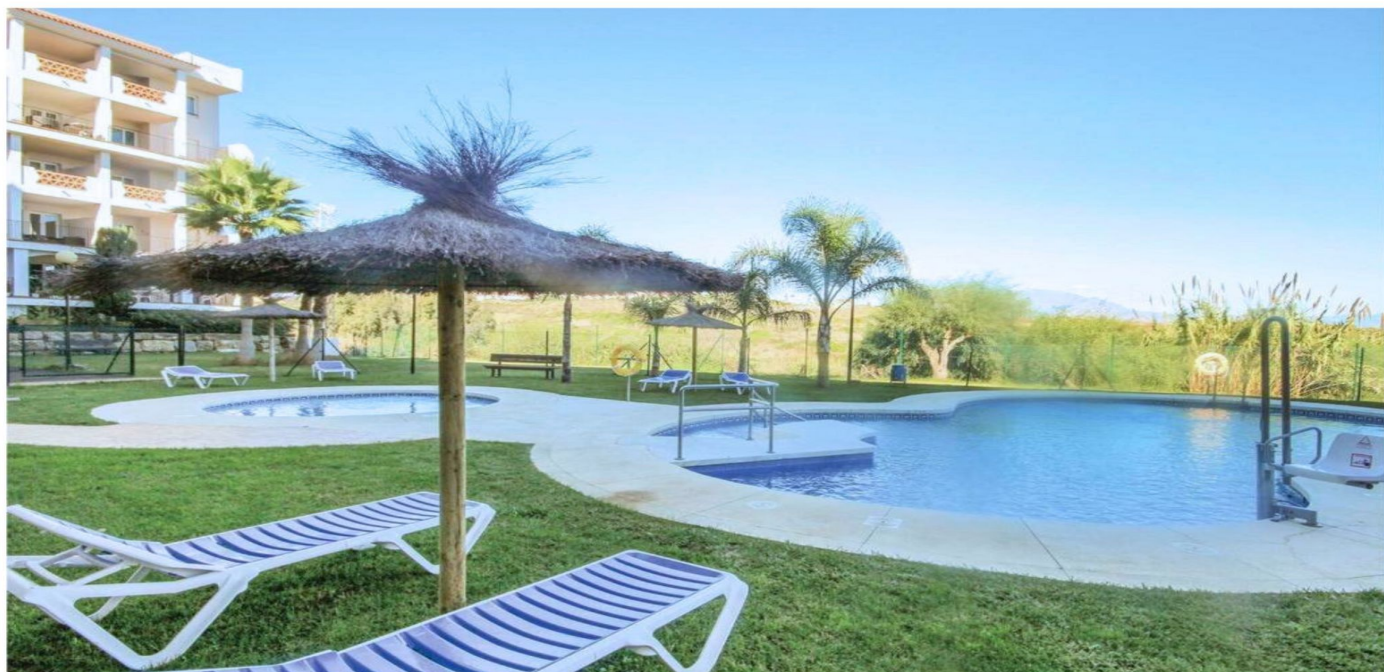




Penthouse Duplex for rent in Manilva, Manilva

1,600 - 1,600 €

Reference: R5133583 Bedrooms: 3 Bathrooms: 3 Build Size: 145m² Terrace: 20m²





Costa del Sol, Manilva

Long-Term Rental – Elegant Duplex Penthouse with Panoramic Sea Views, Office, Pool, and Private Parking – Manilva

Experience the perfect blend of luxury, comfort, and Mediterranean lifestyle in this exceptional 165 m² duplex penthouse, designed for year-round living. Located just minutes from the beach, charming restaurants, boutique shops, and essential services, this residence offers an outstanding opportunity on the Costa del Sol. Situated on the fifth floor of a well-maintained building with an elevator, the property features an airy and light-filled layout spread over two levels: Main Level 2 spacious double bedrooms with fitted wardrobes 2 full bathrooms Bright and inviting living room Separate formal dining area Fully equipped kitchen with direct terrace access Air conditioning throughout Fully furnished Upper Level 1 additional bedroom 1 full bathroom Private office – ideal for remote working Access to a sunny terrace with open sea views Storage room Key Features 165 m² built area over two floors Panoramic sea views from both levels Communal swimming pool and paddle tennis court Private parking space included Fully furnished and ready to move in Quiet and secure residential community This elegant and functional home combines contemporary comfort with timeless style, offering the perfect retreat to enjoy the Costa del Sol's year-round sunshine, natural light, and sea breezes. Contact us today for further details or to arrange a private viewing.



Features:

Features

Covered Terrace
Lift
Private Terrace
Storage Room
Ensuite Bathroom
Marble Flooring
Double Glazing
Solarium
Paddle Tennis
Tennis Court
Utility Room
Jacuzzi
Fiber Optic

Views

Sea
Mountain
Panoramic
Garden
Pool

Pool

Communal
Children`s Pool

Garden

Communal

Utilities

Electricity

Orientation

South

Setting

Urbanisation
Close To Shops
Close To Town
Close To Schools
Close To Forest

Furniture

Fully Furnished

Security

Gated Complex
24 Hour Security
Alarm System
Electric Blinds
Entry Phone
Safe

Category

Luxury

Climate Control

Air Conditioning
Cold A/C
Hot A/C
U/F/H Bathrooms

Condition

Excellent

Kitchen

Fully Fitted

Parking

Underground