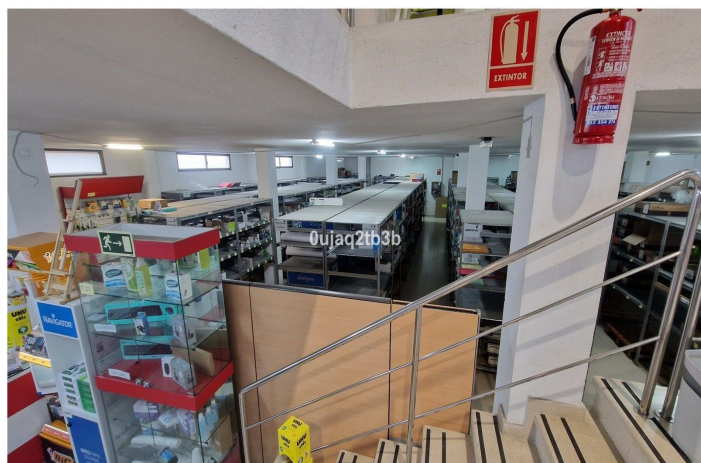
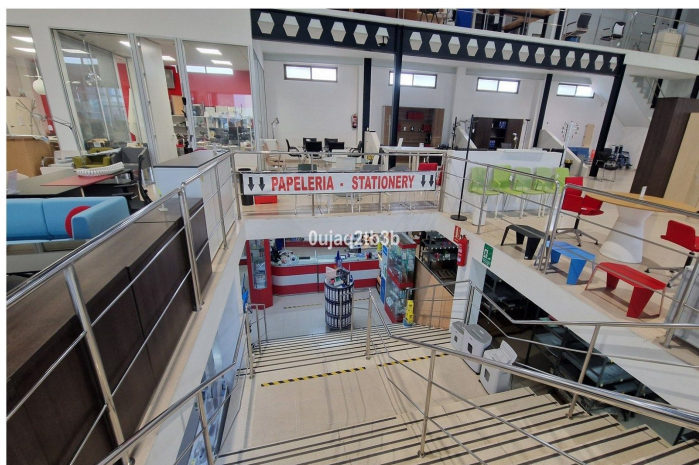




Warehouse for rent in Marbella, Marbella

20.000 - 20.000 €

Reference: R5043529 Bedrooms: 8 Bathrooms: 4 Build Size: 2.738m²





Costa del Sol, Marbella

Logistics-Focused Industrial Warehouse in Marbella's Business Park – 2,738 m² Across 4 Levels This industrial warehouse, located in Marbella's established business and industrial hub, offers an outstanding opportunity for logistics companies seeking a strategically located, well-designed facility tailored for efficient operations. With a total built area of ****2,738 m² spread over four levels****, this property provides the flexibility, accessibility, and infrastructure essential for modern logistics management.

Key Features

- Total area: 2,738 m²
- Floors: 4
- Purpose-built layout: Large, open-plan spaces designed to accommodate warehousing, cross-docking, order preparation, and logistics offices
- Robust infrastructure: Modern, solid construction featuring vehicle-accessible floors and a heavy-duty freight lift that services all levels
- Strategic Location for Distribution: Located in Marbella's industrial estate, this warehouse benefits from ****excellent connectivity to major transport routes****, including highways and key logistics corridors across the Costa del Sol. This location allows for faster dispatch, optimized delivery routes, and seamless integration with regional and national supply chains.

Designed for Logistics Operations Specifically configured to support logistics and supply chain activities, the property offers:

- * High ceilings ideal for racking and vertical storage systems
- * Ample loading and unloading bays
- * Direct truck and trailer access
- * Versatile interior distribution to streamline operational flows, from inbound reception to outbound dispatch
- * Potential to establish integrated logistics offices or control centers

Ideal for Logistics and Fulfillment Companies Whether your focus is on warehousing, distribution, e-commerce fulfillment, or supply chain services, this facility offers the spatial efficiency and operational capacity to grow and scale your business. This 2,738 m² logistics-ready warehouse in Marbella's premier business park represents a strategic asset for logistics companies seeking to strengthen their presence on the Costa del Sol. With its adaptable space, robust access infrastructure, and excellent location, it is ideally positioned to serve as a central logistics hub or regional distribution center.



Features:

Özellikler

Kaldırmak
Ulaşım yakınında
Bodrum

Hareketliliği azaltılmış kişiler için erişim

Görüşler

Kentsel

Mobilya

İsteğe bağlı

Otopark

Garaj
Özel

Oryantasyon

Doğu
Batı

Ayar

Ticari alan
Denize yakın
Dükkanlara Yakın
Şehre yakın
Şehir

Mutfak

Kısmen takılı

Kamu hizmetleri

Elektrik
İçilebilir su
Telefon

İklim kontrolü

Klima

Durum

Harika

Güvenlik

Alarm sistemi
Elektrikli panjur

Kategori

Yatırım
Yeniden satış