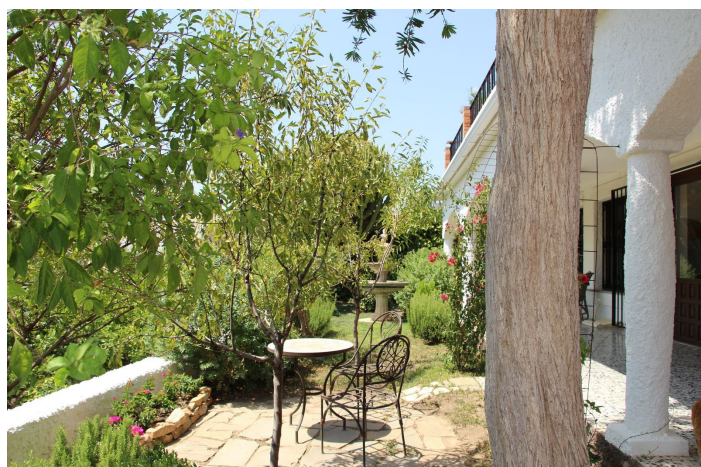




## Abstandsvilla zum Verkauf in Coín, Coín

595.000 €

Referenz: R5133370 Schlafzimmer: 4 Badezimmer: 2 Grundstücksgröße: 803m<sup>2</sup> Garten: 521m<sup>2</sup> Terrasse: 80m<sup>2</sup>





---

## Valle del Guadalhorce, Coín

Boho style villa, located in one of Southern Spain's best inland towns. The property was designed by a Swedish architect and is a fantastic family home. Houses of this style and quality, are becoming increasingly difficult to find. With all of the original design features in place and in exceptional condition. Outside the house is set out around the swimming pool, with numerous shaded terraces to relax and enjoy the incredible views. Inside the property has a spacious living area, a separate dining area, a well maintained kitchen, 4 bedrooms and 2 bathrooms. All with the original features, to enjoy or enhance. The house also has the convenience of a private garage, air-conditioning and solar panels installed. Located in a small urbanization on the outskirts of Coín, the town benefits from exceptional transport links, with Malaga and the International Airport just 25 minutes away and Marbella and the coast also a 25 minute drive. Coín is a town with a real sense of community, it has numerous bars, restaurants as well as supermarkets, banks and shops. The town runs events all year round, and is famous for it's feria's and New Year's Eve celebrations. It has excellent local schools and medical facilities. The property is perfect for anyone wanting enjoy the real Spain, either as a full time home or holiday home away from the coast.



## Eigenschaften:

### Merkmale

Überdachte Terrasse  
In der Nähe des Transports  
Satellitenfernsehen  
Lagerraum  
Badezimmer  
Marmorböden  
Doppelverglasung  
Einstellungsschränke  
W-lan  
Spielzimmer  
Versorgungsraum

### Ansichten

Berg  
Panorama  
Land  
Garten  
Hof  
Wald

### Pool

Privat

### Garten

Privat  
Angelegt  
Einfache Wartung

### Kategorie

Ferienhäuser  
Investition  
Schnäppchen  
Luxus  
Wiederverkauf

### Orientierung

Süden

### Einstellung

Gewerbegebiet  
Urbanisierung  
In der Nähe von Geschäften  
In der Nähe der Stadt  
In der Nähe von Schulen  
Stadt  
Vorort  
Land  
Dorf  
Bergpueblo  
In der Nähe des Waldes

### Möbel

Voll eingerichtet  
Nicht eingerichtet  
Teil eingerichtet  
Optional

### Parken

Garage  
Privat

### Klimakontrolle

Klimaanlage  
Kamin

### Zustand

Gut  
Exzellent

### Küche

Voll ausgestattet

### Versorgungsunternehmen

Strom  
Photovoltaik -Sonnenkollektoren  
Sonnenwasserheizung