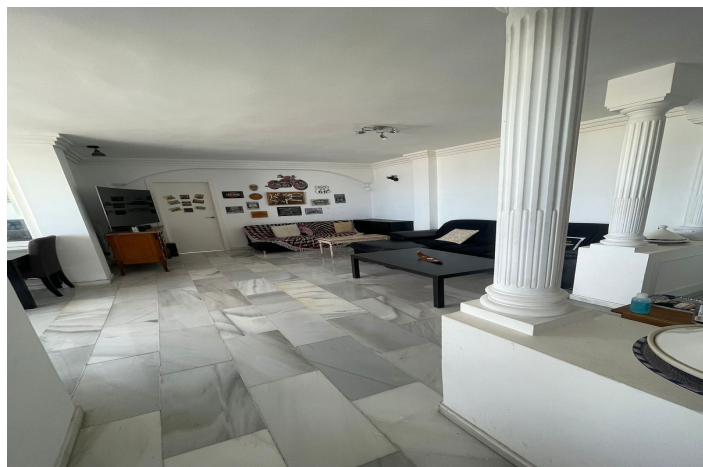




## Penthouse for sale in Benalmadena Costa, Benalmádena

**699,000 €**

Reference: R4763356 Bedrooms: 3 Bathrooms: 2 Build Size: 155m<sup>2</sup> Terrace: 100m<sup>2</sup>





---

## Costa del Sol, Benalmadena Costa

NEW TO THE MARKET! LOCATION - LOCATION- LOCATION! BENALMADENA - PUERTO MARINA We are delighted to bring to you this wonderful 3 bedroom - 2 bathroom Penthouse, investment opportunity - Benalmadena - Puerto Marina. The apartment is just a 2 minutes walk to the beach and Puerto Marina, where there is an endless supply of Bars, Restaurants, Cafes, Supermarkets and Beauty salons and, of course, the beautiful beaches. The Penthouse property, occupies the whole top floor of the building. Because of not having any neighbours, the property has an unrivalled - panoramic sea view of the Marina and the Mediterranean sea, including all the local attractions such as the Ferris wheel, beaches and surrounding landmarks. The views are simply breathtaking! The large terrace is 70 square metres and wraps around the whole of the front and both sides of the apartment. The best thing; the views can never be taken away from the property due to the property being situated directly behind the Puerto Marina that has been built and established for years. No buildings can be built in front of the property, guaranteeing the views forever. The penthouse consists of 3 double sized bedrooms, all with built in wardrobes. Two of the bedrooms have the most amazing views through the large glazed windows, which lead onto the terrace. One of the large bedrooms have their own en-suite bathroom. The living room is bright and airy, due to the high ceilings and large patio doors leading to the wonderful terrace, which lets in ample light. The fully equipped kitchen is separate from the living room. From the kitchen you have amazing views overlooking the sea and marina. The air conditioning, for cooling and heating, is centralised throughout the whole property. The penthouse has a private parking space in the underground car park. This is a must see Penthouse!



## Features:

### Features

Covered Terrace  
Lift  
Near Transport  
Private Terrace  
Satellite TV  
Storage Room  
Ensuite Bathroom  
Marble Flooring  
Double Glazing  
Fitted Wardrobes  
Solarium  
Utility Room  
Barbeque  
Fiber Optic  
Access for people with reduced mobility

### Views

Sea  
Panoramic  
Pool  
Beach  
Port

### Furniture

Fully Furnished

### Parking

Underground  
Garage  
Private  
Covered

### Orientation

South  
South East  
South West

### Setting

Close To Golf  
Close To Port  
Urbanisation  
Close To Sea  
Close To Shops  
Close To Town  
Close To Schools  
Beachfront  
Port  
Marina  
Close To Marina

### Kitchen

Fully Fitted

### Utilities

Electricity  
Drinkable Water  
Telephone

### Climate Control

Air Conditioning  
Cold A/C  
Hot A/C  
Central Heating

### Condition

Fair  
Renovation Required

### Security

Gated Complex  
Alarm System  
Electric Blinds  
Entry Phone

### Category

Holiday Homes  
Investment  
Beachfront  
Resale