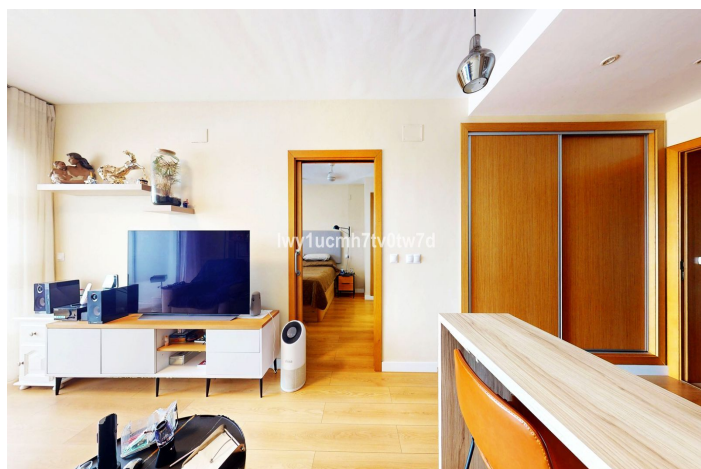
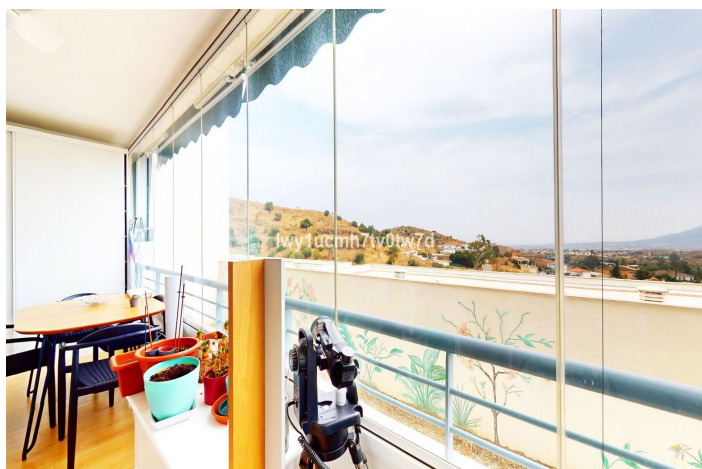




Middle Floor Apartment for sale in Puerto de la Torre, Málaga

180,000 €

Reference: R5121880 Bedrooms: 1 Bathrooms: 1 Build Size: 70m² Terrace: 10m²





Costa del Sol, Puerto de la Torre

ATTENTION!!! Flat in residential for people over 50 years old!!!! You can only buy over 50 and under 70 years! You buy the shares of the cooperative to live in the flat and enjoy all the services of the residential. Are you looking for a home where calm, comfort and an active and social lifestyle reign? This flat is much more than a home: it is an opportunity to be part of a unique, private environment designed to fully enjoy a new phase. Located in a private residential cohousing complex for the over 50s, this property is located in the sought-after area of Puerto de la Torre, north of Malaga city. An established residential area, known for its quiet, safe environment, surrounded by nature, ideal for those who wish to disconnect without leaving the city. The three basic conditions to live in the residential are: - To be between 50 and 70 years of age. - To be mentally and physically capable. - To cover the monthly maintenance costs, which are currently only €675. Translated with DeepL.com (free version) The connections are unbeatable: - Only 3 minutes from the A-7 motorway. - 15 minutes from Malaga International Airport - 20 minutes from the beaches of La Malagueta, Pedregalejo and El Palo. - 15 minutes from the historic centre of Malaga - Several bus lines connect easily to the centre and other key points. The flat, completely refurbished, offers 60 m² of functional and bright design. It is distributed in: - Cosy living-dining room with integrated open plan kitchen. - 1 bedroom with en suite bathroom, very comfortable and private. - Large private terrace with unobstructed sea and mountain views, perfect for relaxing in the evening. - South facing, perfect for all seasons. Also includes indoor parking space, storage room and access to a communal area.



Features:

Features

Covered Terrace
Lift
Near Transport
Storage Room
Ensuite Bathroom
Double Glazing
24 Hour Reception
Fitted Wardrobes
WiFi
Gym
Games Room
Wood Flooring
Access for people with reduced mobility

Views

Sea
Mountain
Panoramic

Pool

Communal

Garden

Communal

Utilities

Electricity
Drinkable Water
Gas
Solar water heating

Orientation

South

Setting

Urbanisation
Close To Town

Furniture

Fully Furnished

Security

24 Hour Security
Entry Phone

Category

Distressed

Climate Control

Air Conditioning

Condition

Recently Renovated

Kitchen

Fully Fitted

Parking

Open