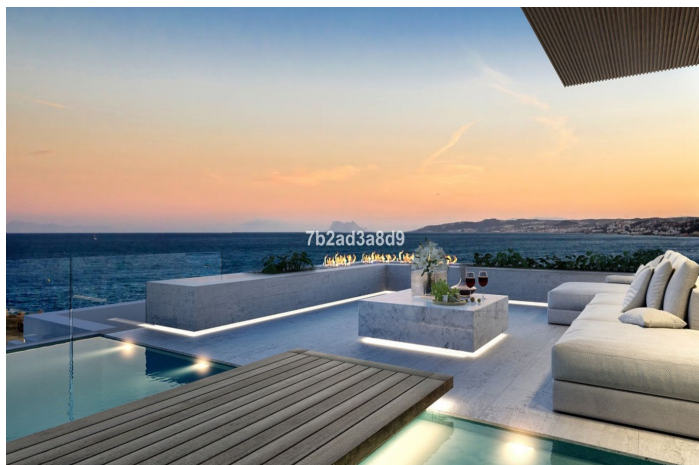
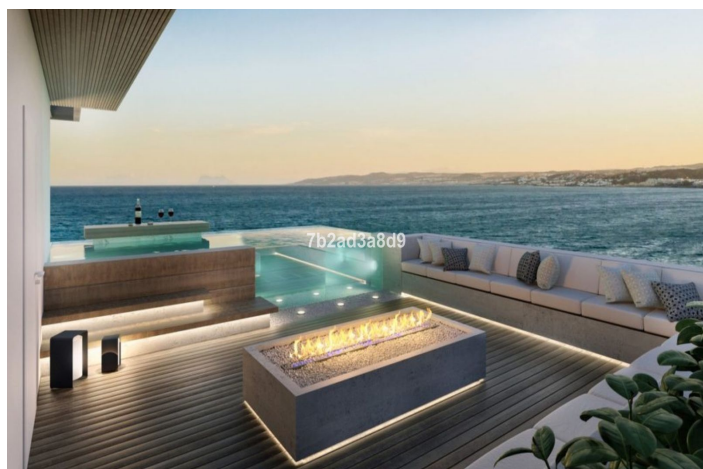
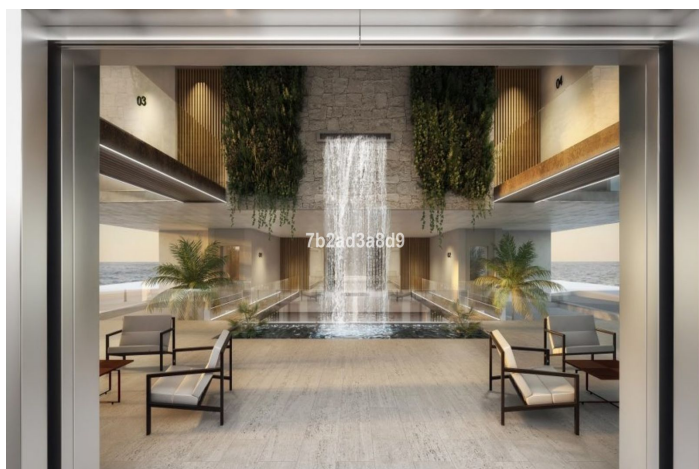




Middle Floor Apartment for sale in Estepona, Estepona

4.385.000 €

Reference: R4766998 Bedrooms: 4 Bathrooms: 4 Build Size: 270m² Terrace: 190m²





Costa del Sol, Estepona

Exclusive seafront apartment located by the popular beach of Playa del Cristo, a beautiful bay in Estepona on the Costa del Sol. These stunning home have the size, luxury and finishings of a villa and the most incredible panoramic views of the Mediterranean Sea. Luxurious property for sale in this exclusive seafront resort offers a contemporary design, ample interior spaces with views out into the Mediterranean through enormous windows, and extensive terraces with private pools. The use of high-quality materials and cutting-edge technology make this development a real gem. All the homes come with at least two large garage spaces and one storeroom. This promotion has beautiful communal areas and lush gardens, including infinity outdoor and indoor pools, a full spa, sauna and fully equipped gym to enjoy all year round. There is direct access to the beach, one of the key benefits of living in a beachfront development on the Costa del Sol. The resort is located in one of the most beautiful beaches of Estepona. Just a few minutes' walk from the marina, the town centre, with excellent connections to Marbella, Puerto Banus, La Duquesa, Sotogrande and the airports of Malaga and Gibraltar. Estepona, the town of thousand flowers, combines a rich cultural legacy and the traditional air of an old fishing village with a cosmopolitan feel. There is no shortage of golf courses nearby with 10 in the area. On top of this, Estepona has more than 20 km of beaches with plenty of bars, restaurants, and water sports.



Features:

Özellikler

Kapalı teras
Kaldırmak
Özel teras
Depo
Ensuite Banyo
Çift cam
Spor salonu

Görüşler

Deniz

Oryantasyon

Güney Batı

İklim kontrolü

Klima
Şömine
U/F Isıtma

Ayar

Sahil kenarında
Limana yakın
Denize yakın
Dükkanlara Yakın
Şehre yakın
Okullara yakın
Sahil
Şehir
Marina'ya yakın
Ön cepheli plaj kompleksi

Mutfak

Tam takılmış
Mutfak yükü

Otopark

Yeraltı
Özel
Birden fazla

Durum

Harika
Yeni İnşaat

Havuz

Kapalı
Özel

Güvenlik

Elektrikli panjur

Bahçe

Ortak

Kamu hizmetleri

Elektrik
İçilebilir su

Kategori

Tatil Evleri
Sahil
Lüks
Modern