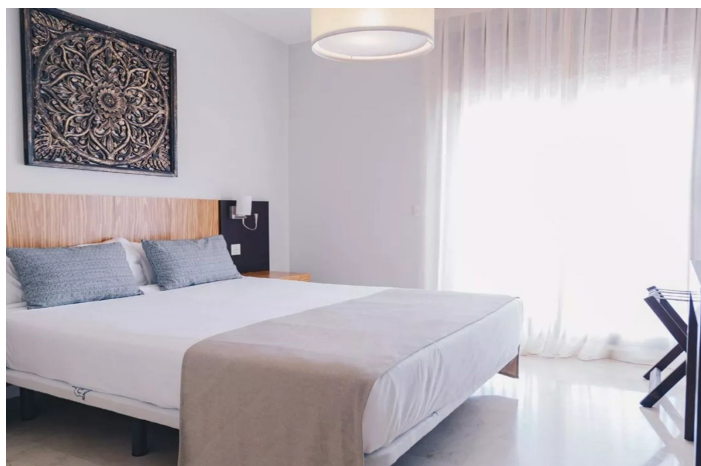




## Apartment der obersten Etage zum Verkauf in Estepona, Estepona

175.000 €

Referenz: R5081626    Schlafzimmer: 2    Badezimmer: 2    Garten: 75m<sup>2</sup>    Terrasse: 28m<sup>2</sup>





## Costa del Sol, Estepona

**LUXURIOUS 2-BEDROOM SEA VIEW INVESTMENT APART HOTEL WITH GIBRALTAR VIEWS – ONA VALLE ROMANO GOLF RESORT, ESTEPONA** This elegant 2-bedroom investment apart hotel unit is located in the highly sought-after Ona Valle Romano Golf Resort in Estepona, offering a rare combination of stunning views, modern comfort, and high investment value. With panoramic vistas stretching across the Mediterranean Sea all the way to Gibraltar, this property offers both a relaxing lifestyle and a strong return on investment. The property boasts approx. 75 m<sup>2</sup> of interior living space and a spacious 29 m<sup>2</sup> private terrace, ideal for enjoying the sun, dining al fresco, or simply relaxing with spectacular views. The apartment includes two generously sized bedrooms, two modern bathrooms, and a bright open-plan kitchen and living area, fully equipped for both comfort and functionality. Owners and holiday guests at Ona Valle Romano benefit from full access to a wide range of resort-style amenities, including a large communal swimming pool, a 27-hole championship golf course, a fitness center, massage and wellness services, an on-site restaurant and lounge bar, and a kiosk store for snacks, drinks, daily essentials, and holiday souvenirs. Ownership also includes the option to personally use the apartment for up to 8 weeks per year, while the rest of the time, the property can be rented out through the resort's fully managed rental program. Ona Hotels handles all bookings, check-ins, guest services, and maintenance — offering a truly hands-off investment experience. Thanks to this professional rental management, owners can expect a net rental yield of 5% to 7% annually, depending on occupancy and season. In addition, the real estate market in Estepona is on the rise, with annual capital appreciation of 6% to 8% recorded over the past year. This means your total potential return on investment lies between 11% and 15% per year, combining both rental income and the natural value growth of the property — a highly attractive performance for a holiday apartment in a prime coastal location. Ideally located just 30 minutes from Málaga Airport and 45 minutes from Gibraltar, and surrounded by golf courses, beaches, marinas, and the charming town of Estepona, this property is perfectly positioned for both leisure and long-term value. **A PREMIUM COASTAL INVESTMENT APART HOTEL** With a strong combination of lifestyle benefits and financial performance, this 2-bedroom investment apart hotel with breathtaking sea views, full resort access, and a total return potential of 11% to 15% per year offers one of the smartest investment opportunities on the Costa del Sol. Important; While there are other similar apartments available for sale in the complex, this is the only unit that offers spectacular sea views, making it a truly unique and sought-after investment. Contact us today to receive more information or to schedule a private viewing — on-site or virtually. Please note: The photos currently shown are generic images of the Ona Valle Romano complex. However, a video of the specific apartment is already available. More accurate and detailed photos will be uploaded soon.



## Eigenschaften:

### Merkmale

Aufzug  
Private Terrasse  
Satellitenfernsehen  
Badezimmer  
Doppelverglasung  
24 -ständiger Empfang  
Einstellungsschränke  
W-lan  
Fitnessstudio  
Paddel -Tennis  
Restaurant vor Ort  
Keller  
Glasfaser

### Ansichten

Meer  
Berg  
Panorama  
Land  
Garten

### Pool

Gemeinschaft

### Garten

Gemeinschaft

### Versorgungsunternehmen

Strom  
Trinkbares Wasser

### Orientierung

Süden  
Südwesten

### Einstellung

Urbanisierung

### Möbel

Voll eingerichtet

### Sicherheit

Gated Complex  
24 -Stunden -Sicherheit  
Eingabetelefon

### Kategorie

Ferienhäuser  
Investition  
Billig  
Golf  
Zeitgenössisch

### Klimakontrolle

Klimaanlage  
Kalte a/c  
Heiße A/C.

### Zustand

Exzellent

### Küche

Voll ausgestattet

### Parken

Unterirdisch  
Privat  
Straße