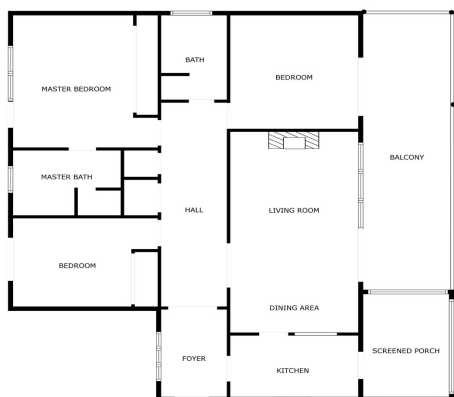




Penthouse for sale in Estepona, Estepona

475,000 €

Reference: R5049754 Bedrooms: 3 Bathrooms: 2 Plot Size: 1m² Build Size: 133m² Terrace: 42m²



SIZES ARE APPROXIMATE, ACTUAL MAY VARY.





Costa del Sol, Estepona

Imagine waking up to the unmistakable charm of Spain – the warm Mediterranean breeze, the scent of lush greenery, and the captivating views of the sea and La Concha mountain. This 3-bedroom, 2-bathroom Penthouse in Atalaya, Estepona exudes authentic Andalusian style and offers a rare opportunity to create your dream coastal retreat. Situated in a small, beautifully maintained community of just 6 apartments, the property is surrounded by lush, green gardens, creating a tranquil oasis where you can unwind by the communal pool or enjoy the peaceful ambiance. The south-facing penthouse features a spacious terrace – the perfect spot to savor your morning coffee while soaking up the panoramic views. While the property has been renovated in 2004 it may benefit from some renovation, it offers incredible potential to create a stylish, modern home while preserving its Andalusian charm. The layout includes a generously sized living area, ample storage space, and a covered parking spot. The community allows short-term rentals. Residents can take a leisurely 5-minute walk to the renowned Atalaya Golf Club – a golfer's haven and 10-minute drive to over 10 world class Golf courses. With Puerto Banús and the beach just a 10-minute drive away, you're perfectly positioned to enjoy the best of Costa del Sol living. Everyday amenities are close by, including Mercadona, Aldi, Atalaya Bilingual School, and the upcoming Atalaya Tennis Club, making this property not only a peaceful retreat but also a promising investment opportunity. Monthly cost, including community fee, IBI and Basura is 465€/month.



Features:

Features

Covered Terrace
Near Transport
Private Terrace
Storage Room
Ensuite Bathroom
Fitted Wardrobes

Views

Sea
Mountain
Panoramic
Garden
Pool

Pool

Communal
Garden
Communal

Utilities

Electricity

Orientation

South

Setting

Close To Sea
Close To Shops
Close To Town
Close To Schools

Furniture

Fully Furnished

Security

Gated Complex

Climate Control

Air Conditioning
Fireplace
U/F/H Bathrooms

Condition

Good

Kitchen

Fully Fitted

Parking

Private
Covered
Communal