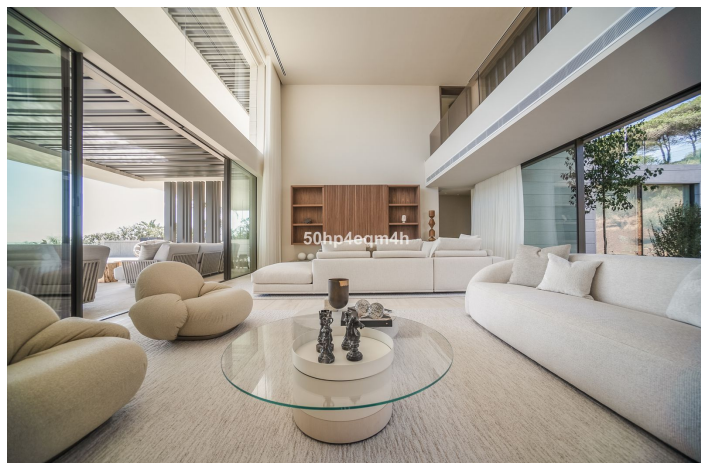
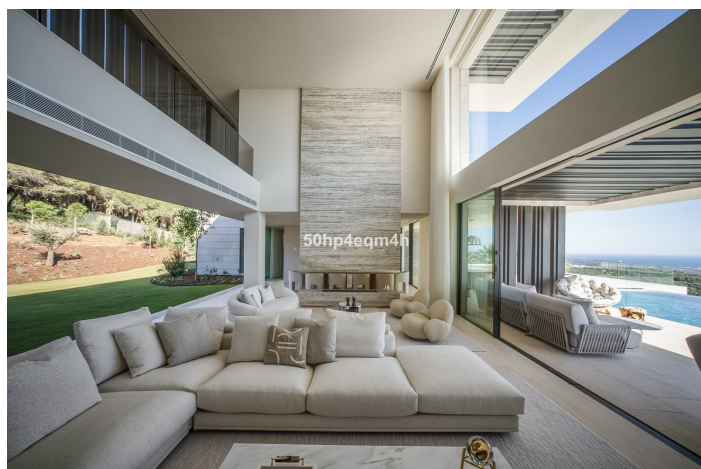




## Detached Villa for sale in Sotogrande, Sotogrande

8,900,000 €

Reference: R5060629 Bedrooms: 6 Bathrooms: 6 Plot Size: 2,554m<sup>2</sup> Build Size: 761m<sup>2</sup> Terrace: 606m<sup>2</sup>





---

## Costa de la Luz, Sotogrande

Brand new superb modern villa with panoramic views at La Reserva de Sotogrande. Located at a privileged spot at La Reserva de Sotogrande overlooking the Mediterranean sea, this impressive modern luxury the villa immersed in the blue, enjoys panoramic golf & sea views dominating the hill and the pine woodland backing one of the gardens. Panoramah is designed to provide unobstructed sea views from all main spaces and bedrooms. The main floor comprises a large living room with an open concept kitchen with breakfast sitting area, a formal dining room, secondary lounge room overlooking the exquisite back garden and the woodland, an office with views and a bathroom ensuite plus a guest master bedroom with dressing room and bathroom ensuite. All the areas have direct access to the pool terrace with the infinity pool perched in the sky. On the second floor, there are 3 secondary bedrooms with a private terrace and bathroom ensuite on the left wing plus the master bedroom on the right wing with a walking closet and bathroom ensuite, all with spectacular views. On the amenities flank, Panoramah offers state of art bodega, cinema room, a gym fully equipped, SPA with a sauna and a Turkish bath, top range garage and comes fully furnished. The service area is provided with staff quarters, 2 guest toilets plus pool toilet, laundry room, storeroom, 2 separate machinery rooms and exterior parking area.



## Features:

### Features

Covered Terrace  
Lift  
Private Terrace  
Storage Room  
Ensuite Bathroom  
Double Glazing  
Fitted Wardrobes  
WiFi  
Gym  
Sauna  
Utility Room  
Jacuzzi  
Domotics  
Staff Accommodation  
Basement  
Fiber Optic

### Views

Sea  
Mountain  
Panoramic  
Country  
Garden  
Pool

### Pool

Private

### Garden

Private  
Landscaped

### Utilities

Electricity  
Drinkable Water  
Telephone

### Orientation

South

### Setting

Close To Golf  
Urbanisation  
Close To Town  
Close To Schools  
Close To Forest  
Close To Marina

### Furniture

Fully Furnished

### Security

Gated Complex  
24 Hour Security

### Category

Golf  
Luxury  
Contemporary

### Climate Control

Air Conditioning  
Cold A/C  
Hot A/C  
Fireplace  
U/F Heating

### Condition

Excellent

### Kitchen

Fully Fitted  
Kitchen-Lounge

### Parking

Underground  
Garage  
Private  
Covered  
More Than One