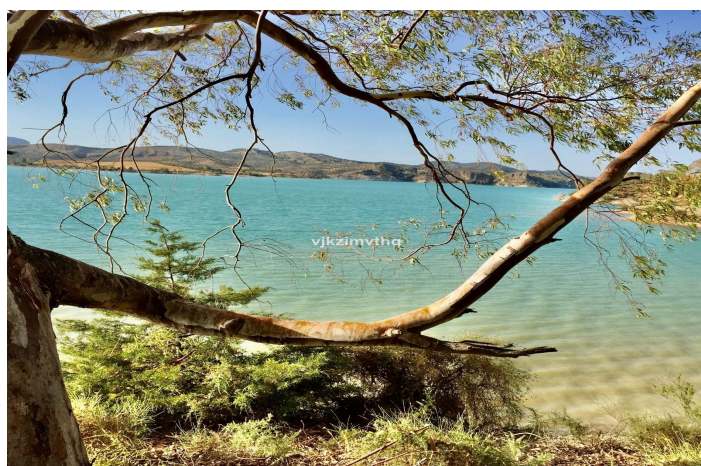
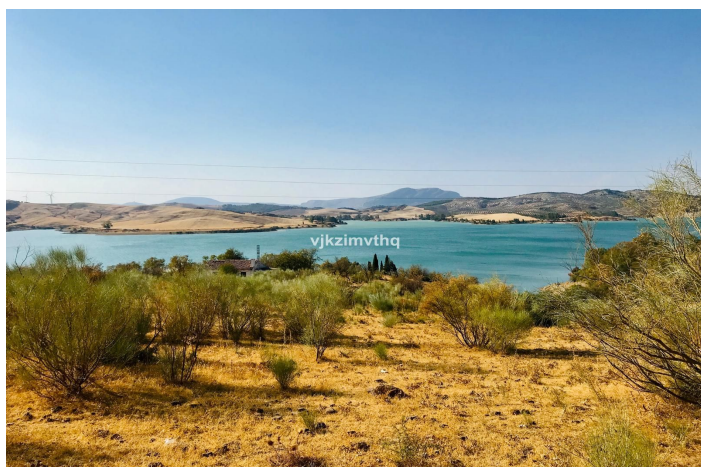




Commercial Plot for sale in Ardales, Ardales

700,000 €

Reference: R5051047 Plot Size: 37,909m² Build Size: 104m²





Guadalteba, Ardales

Prime Commercial Land for Sale – Near Caminito del Rey, El Chorro, Ardales (Guadalhorce Lake District) An exceptional opportunity to invest in 38,000 m² of commercial land in one of Andalusia's top tourist destinations, just minutes from the famous Caminito del Rey and the stunning Guadalhorce Lakes. Plot Features: - 100 meters of lake frontage - Direct road access - On-site water and electricity - Only 45 minutes from Málaga Airport via fast dual carriageway Permitted Development: - Camping/Glamping site on up to 50% of the land - Hotel construction on 5% of the plot (up to 1,900 m², max height 7m) - Existing finca can be renovated up to 105 m² The area still lacks adequate tourist accommodation and services, making this a unique opportunity for hospitality or eco-tourism investment.