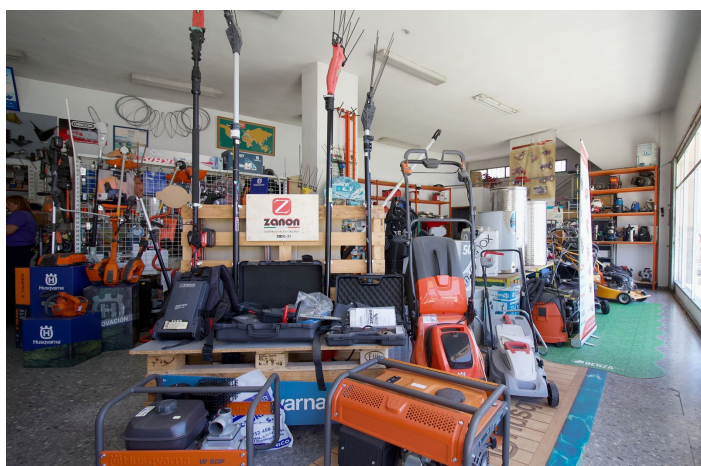




## Commercial Premises for sale in Coín, Coín

990.000 €

Reference: R5046970 Plot Size: 460m<sup>2</sup> Build Size: 900m<sup>2</sup>







---

## Valle del Guadalhorce, Coín

A unique opportunity in a prime location! This spacious 900 m<sup>2</sup> commercial space, located on a 460 m<sup>2</sup> plot, combines functionality and versatility in a busy area. With two floors and a basement that doubles as a garage, it offers multiple possibilities for your business or real estate project. Its strategic design includes separate entrances and exits facing two streets, facilitating vehicle access and exit, as well as a main entrance from the street. The location is excellent: at street level, surrounded by restaurants, supermarkets, and with easy access to nearby parking, ensuring high customer traffic and convenience for employees and visitors. The space is very spacious and includes a repair shop and two bathrooms. It can also accommodate the construction of up to two additional floors, allowing for a combined business and residential space above, always in consultation with the corresponding urban planning. Ready to continue with your current business or adapt to new ideas, this space offers endless possibilities for growth and expansion. For more information or to arrange a visit, we'd be happy to assist you. Don't miss this opportunity to settle in one of the best areas!



## Features:

### Görüşler

Sokak

### Ayar

Dükkanlara Yakın

Okullara yakın

Şehir

Köy

### Durum

Restorasyon Gerekli

### Otopark

Yeraltı

Garaj

Sokak

Birden fazla

### Kategori

Yatırım

Yeniden satış